

Shakespeare

Newsletter of Shakespeare branch of CAMRA - Real ale in Shakespeare Country and The Vale



FREE
Please take
one

WHALE MAKES A SPLASH AT No. 10

Warwickshire's newest brewers (and it appears, the youngest brewery owners in the country), Tom and Ed Coyte, certainly made a big splash on 12th September when they were invited to meet the Prime Minister at a Downing Street reception to celebrate Whale Ale, their Brailles based brewery and showcase their beers.

Whale Ale Ltd. was one of just ten companies selected from thousands that have secured start-up funding through schemes set up by the government aimed at supporting new British businesses.

Whilst discussing their venture with them, Mr Cameron pulled and tasted his own pint, giving the brothers a definite thumbs up. Tom said, "We were very proud to see our beer enjoyed by the Prime Minister especially since we understand he is a fan of British real ale. The reception was held upstairs in a state room and the Prime Minister was keen to pour his own beer and have a taste."

Ed added: "We found it surreal to park our van outside the front door of Number 10 for most of the day! We also had to be quite careful carrying casks of beer up the main staircase and into the state rooms. Mr Cameron really enjoyed our beers which were then sampled by a crowd of ministers, senior civil servants, Lords and entrepreneurs once the Prime Minister had departed!"

We at Shakespeare CAMRA are absolutely delighted, (though hardly surprised), that Whale Ale was amongst those selected to showcase at the Downing Street reception. Despite the government's dismal lack of support for pubs and the disturbing trend of pub closures, Ed and Tom are part of a 14% growth in brewing and join 187 new breweries and over 5200 regularly brewed British beers to feature in the recently launched *Good Beer Guide 2014*.

According to GBG editor Roger Protz, "There has been a boom in the growth of breweries over the last 12 months, resulting

in a total of 1147 breweries now producing beer in the UK – and with more breweries comes greater choice for the drinker and more opportunities to buy locally produced brews."

Well it would seem that David Cameron doesn't need asking twice.

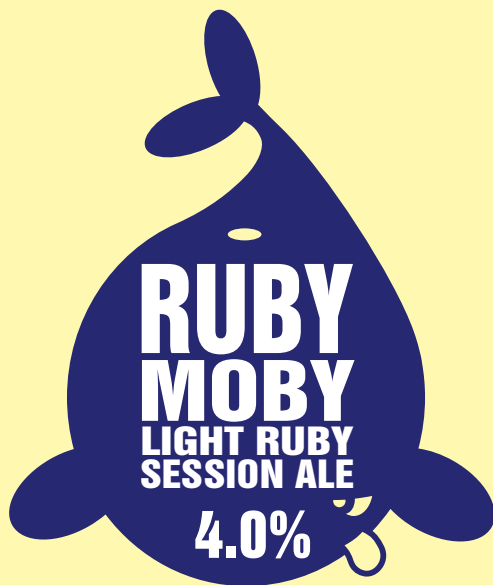
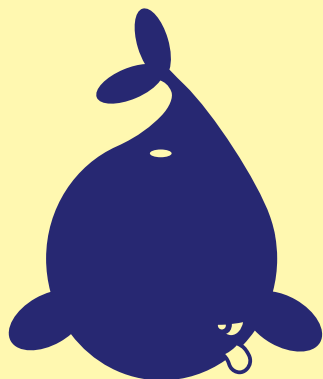


● Prime Minister meets Ed and Tom at No. 10



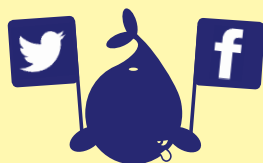
Use your mobile
phone's QR
reader to scan

WHALE ALE CO WARWICKSHIRE



AVAILABLE IN 9 GALLON FIRKINS & BOTTLES

01608 686974
sales@whaleale.co.uk



Chairman's Letter

For those of you who normally receive *Shakesbeer* in the post you will be used to a word from our Chairman, Lloyd Evans. We have decided to include this in the magazine so that those who might be thinking about coming and joining the branch in a more active way can see a small summary of what we get up to that previously may not have made it in here.

Hello Branch Members,

Well, all I can say is what a beer festival! A big thank you to all who volunteered to help at some point over the weekend at Stratford this year. Even though we put on many more beers and ciders than in previous years we actually sold every last drop by early on Saturday evening. This naturally caused some disappointment for those who came along to the festival later but based upon last years figures, when we had to pour some away again on the Sunday morning; there was far more choice and quantity then any other festival that we have held at the racecourse. So for those of you that came and managed to sample the ale we thank you and for those of you that missed out, we apologise. We will be working our hardest to bring more choice to more of you and new ways to try and keep you informed of availability throughout the event.

Whilst we now start to look forward to what will be the 8th Stratford Beer Festival, we could well be looking for a different venue as the racecourse is currently unable to confirm a date with us for next year in June. If you therefore have any suggestions on alternative venues for us to consider, please email committee@stratfordbeerfestival.org.uk

Personally speaking my CAMRA activities have been a bit less frequent recently as I have been on holidays up to the Orkney isles during the summer - but it was good to return to a well attended branch meeting at the **Armouries Arms**, Pathlow near Stratford. During that meeting it was decided to award the **Gate Inn**, a Hook Norton pub at Brailes the Summer Pub of the Season and a presentation summary can be seen further in.

Finally I also represented the branch at the official opening of the new Purity brewhouse which will enable the brewery to produce up to 140,000 pints of beer every week, a 150% increase in brewing capacity. The installation of the Braukon manufactured semi-automated brewing system, which was imported from Germany, began in early April and it was a pleasure to see it in operation.

Next Branch meeting - Boars Head, Hampton Lucy, Church Street, Hampton Lucy, CV35 8BE on Tuesday, 15 October, 20:00.

Best wishes as always, Lloyd



Pub News...

Abbots Salford

Vineyard Landlady Lisa took over the lease early in 2012 and despite the signboard declaring "Freehold for Sale" Lisa does a brisk trade. The pub is open all day every day and food is served lunchtimes and evenings Wed-Sat plus Sunday lunchtime. Wednesday is quiz night and also curry night. Well kept Greene King IPA is always available.

Alcester

Roebuck It was pleasing to see 3 ales on a recent visit - Wye Valley *Butty Bach*, Purity *Gold* and *Mad Goose*.

Bidford-on-Avon

The Bull's Head Kevin and Lesley have been busy raising money for charity and have kept the tradition of the Bidford raft race going along with a whole August Bank Holiday weekend full of activities which included leg waxing, head shaving, bush tucker trial and beach party disco to name just a few.

With this wonderful effort all involved have raised £1400 for Help for Heroes.

Upper Brailes

The Gate Inn, alongside their regular Hooky line up plus changing guest ale, they are now serving *Old Rosie*. They also have two lovely rooms for B&B.

Lower Brailes

The George We bid a fond farewell to Bill & Charmaine and welcome Baggy Saunders who has taken on the tenancy and has managers Viki and Gary behind the bar. Is there any end to his expanding empire, we make that three now or is it four!

Stratford-upon-Avon

The One Elm has won the Customer Care Award 2013 in the 'Pride of Stratford Awards'. Judges said, "...The One Elm has an almost fanatical approach to customer care and make sure they go the extra mile".

The Bear at the Swans Nest In the West Midlands CAMRA county pub of the year contest **The Bear at the Swans Nest** a former branch pub of the season was awarded third place for Warwickshire, which is quite a feat, which gives Shakespeare CAMRA two pubs in as many years that have ranked near and at the top of Warwickshire. Congratulations!



● Pete Godfrey Local GBG Officer, CAMRA
Regional organiser Jim Witt Pub Manager
Simon Taylor, General Manager Neil Hanson

Honeybourne

Thatched Tavern A recent visit here revealed Wadworth 6X and Greene King Abbott with *Old Rosie* cider on a third pump.

Iron Cross

The Queens Head They continue their expansion here with the introduction of a number of lovely ensuite rooms and continue to serve food and three cask ales.

Bretforton

The Fleece Saturday 12th and Sunday 13th October

Following the great success of the last few Apple and Ale festivals, the Fleece Inn will be hosting its annual beer and cider celebrations again this year. The





Fleece Orchard will house a real ale and scrumpy cider tent with over 40 ales and ciders to try. The thatched barn will be the place to go to sample a range of delicious local cheeses and apples with live music later in the evening, the event is free entry and is a brilliant way to spend an October afternoon.

Evesham

Cider Mill Despite the name there is no real cider here but there is cask beer which changes regularly. Recent beers have included Banks's *Sunbeam*, Adnams *Southwold Bitter* and *Prescott Hill Climb*. Nuts and crisps are the only food and the pub opens at 3pm Mon-Fri and 12 noon Sat/Sun. There is a pool table and SKY Sports TV. The nearby Hampton rope ferry will take you across the River Avon for 50p. Bus 551 (and others) stops outside the door.

Fairfield Inn This modern estate pub is open all day every day and has one real ale hand pump. On a recent visit there was no real ale so worth checking before setting out.

Wixford

The Three Horseshoes It was with great interest that we learnt that having been through a reopening earlier in the year there was a change of landlord yet again. This time we welcome Pete Rust who has a good pedigree in running pubs and knowledge of the industry and has taken on the pub as tenant.

Armscote

July saw the launch of **The Fuzzy Duck** formerly The Fox and Goose which has been boarded up for some time. Now owned by the people behind Baylis and Harding toiletries who have the concept of 'affordable luxury' at heart. A range of real ales on tap include *Purity Mad Goose* and an ever changing guest ale.

Shipston-on-Stour

White Bear Punch Taverns sold this pub during July 2013 to the Donnington Brewery in nearby Stow on the Wold. The regular Donnington beers of *BB* and *SBA* together with the newly launched *Donnington Gold* soon occupied three of the four hand pumps but early indications suggested that the fourth hand pump would become redundant. On a recent visit there was no news of any guest beers. However *Old Rosie* cider remains available on draught. The pub is open all day every day and has B&B rooms also available.

Cherington

Cherington Arms Sisters Charlotte and Katie together with their father, Tom took over in August 2013 after relief manager Richard and his wife (and top cook) Rachel had held the reins since February. The pub is open all day from 4.30pm Mon/Tues and 12 noon Wed-Sun. *Hooky Bitter* and *Hooky Lion* plus one of the guest ales occupied the three hand pumps when they took over and food will soon be reinstated. There is a plan to open a village shop in the building also. Note also the pub has a new phone number 01608 685183

Harvington

Golden Cross It's all change at the

Golden Cross after a brief closure and its good to see its reopened again with father and son team Richard and Kevin Meggeson. Opening Monday – Thursday 4pm – 11pm, Friday – Sunday 12 – 11pm. There are plans to reintroduce food and although no real ale at the moment – watch this space.

Wellford-on-Avon

Sadly **The Four Alls** looks to have called time again and Enterprise Inns awaits new tenants for this attractive riverside pub.



Edgehill

We can report that **The Castle** has a new landlord and changes are afoot. New landlord Mark took over this Hook Norton pub in October 2013. There are ambitious plans to refurbish the pub and it is due to close for two months from mid January 2014 so that the bar can be moved and the viewing platform overlooking the battlefield can be brought inside and under cover. In the meantime the pub is open at lunchtimes and evenings Tues-Fri and all day Sat/Sun with food served at all sessions. Closed Mondays. On a recent visit the three beers on handpump were *Hooky*, *Mild* and *Lion*.

He has taken over at the **Fox** in Farthinghoe and he plans to run both the Castle and the Fox as sister pubs.

The Broom Tavern

AFTER MANY MONTHS OF HARD WORK, DETERMINATION AND A FEW CHALLENGES ALONG THE WAY, WE ARE VERY EXCITED TO ANNOUNCE THAT WE ARE...

OPEN FOR BUSINESS!

AND WE ARE INVITING YOU ALL TO COME AND TRY US.



WE HAVE BEEN SPENDING OUR TIME TRYING TO RESTORE THIS LOVELY VILLAGE PUBS NATURAL BEAUTY AND MAKE IT A WELCOMING ENVIRONMENT FOR YOU ALL TO ENJOY.

BEING TWO GREAT CHEFS WITH A GOOD KNOWLEDGE OF THE MIDLANDS, WE WERE PASSIONATE TO BRING ALL WE HAD LEARNED OVER THE YEARS TO THE BROOM TAVERN AND WE CANNOT WAIT TO SHOW YOU WHAT GREAT FOOD AND DRINKS WE HAVE TO OFFER.

WE REALLY BELIEVE THAT WE MUST SUPPORT OUR LOCAL COMMUNITY AND WHERE POSSIBLE HAVE SOURCED LOCAL SUPPLIERS WHO HAVE THE MOST FANTASTIC QUALITY PRODUCTS – MANY JUST A FEW MILES FROM OUR DOORSTEP.

SO PLEASE KEEP A GAP IN YOUR DIARY TO COME AND VISIT US, WE WOULD LOVE TO HAVE YOUR SUPPORT AND HOPE TO PROVIDE YOU WITH A GREAT COUNTRY PUB EXPERIENCE. BOOKING IS ADVISABLE SO TO RESERVE A TABLE OR FOR ANY OTHER INFORMATION:

Call **01789 778199** or E-Mail us **enquiries@thebroomtavern.co.uk**

The Broom Tavern



BEAUTIFUL 16TH CENTURY PUBLIC HOUSE

TRADITIONAL BAR SERVING LOCAL AWARD WINNING REAL ALES, CIDERS AND FINE WINES AND SITUATED IN ONE OF SHAKESPEARE'S DRINKING HAUNTS

SUNNY SPACIOUS FRONT AND REAR BEER GARDENS FOR THE WARM WEATHER AND ROARING LOG FIRES FOR THOSE COLD RAINY DAYS

GREAT QUALITY, FRESH LOCAL INGREDIENTS BROUGHT TOGETHER TO CREATE FANTASTIC SEASONAL MENUS FROM TWO WELL ESTABLISHED CHEFS IN THE MIDLANDS

NEWLY REFURBISHED AND RESTORED BOTH INSIDE AND OUT, OFFERING FREE WI-FI AND DAILY NEWSPAPERS

LOVELY SUNDAY LUNCHES WITH FRITZ'S FAMOUS YORKSHIRE PUDDINGS SERVED WEEKLY FROM 12PM

OPENING HOURS

MONDAY – THURSDAY
12.00 – 3.00 / 5.00PM ONWARDS

FRIDAY, SATURDAY AND SUNDAY
OPEN ALL DAY FROM 12.00PM

32, High Street, Broom, Alcester, Warwickshire B50 4HL

Email us at **enquiries@thebroomtavern.co.uk** or call us on **01789 778199**

www.thebroomtavern.co.uk

 /thebroomtavern

 @TheBroomTavern



Closing date for copy for the next issue of **Shakesbeer** is **30th November 2013**



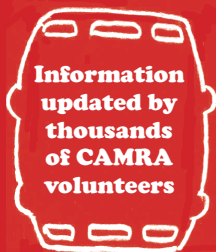
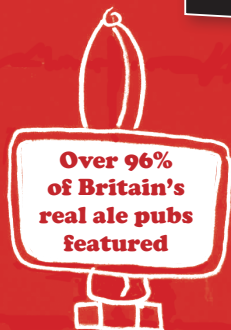
CAMPAIGN
FOR
REAL ALE

WHAT?UB



whatpub.com

Featuring over 35,000 real ale pubs



Thousands of pubs at your fingertips!

CAMRA's Great British Bee

This is Britain's biggest beer festival without a doubt! Held again this year at London's Olympia on August 13th - 17th with an estimated 55,000 festival goers, it was certainly the place to be to sample the largest choice of around 800 ales, ciders, perries and foreign beers anywhere.

From self-themed days and tutored tastings to announcing Britain's most loved soap landlord / lady... for some of us however, it's all about one thing – Champion Beer of Britain!

This is a competition run nationally throughout the CAMRA branches and judged under a set criteria by a trusted impartial panel at beer festivals who have been handed charge of a category. Our very own festival has been trusted numerous times and this year we were trusted with the Best Bitters category. The winners from each category go forward to make up a final list for GBBF, below are the winners...



OVERALL WINNERS...

Gold: Elland - *1872 Porter* (West Yorkshire)
Silver: Buntingford - *Twitchell* (Hertfordshire)
Bronze: Fyne Ales - *Jarl* (Argyll)

MILD CATEGORY

Gold: Great Orme - *Welsh Black* (Conwy)
Silver: Cotswold Spring - *Old Sodbury Mild* (Gloucestershire)
Bronze: Fernandes - *Malt Shovel Mild* (West Yorkshire)

BITTERS CATEGORY

Gold: Buntingford - *Twitchell* (Hertfordshire)
Silver: Moor - *Revival* (Somerset)
Bronze: Surrey Hills - *Ranmore Ale* (Surrey) and Butcombe Bitter (Somerset)

BEST BITTERS

Gold: Mordue - *Workie Ticket* (North Shields)
Silver: Surrey Hills - *Shere Drop* (Surrey)
Bronze: Purple Moose - *Glaslyn* (Gwynedd) and Woodfordes - *Nelsons Revenge* (Norfolk)

GOLDEN ALES

Gold: Fyne Ales - *Jarl* (Argyll)
Silver: Buntingford - *Polar Star* (Hertfordshire)
Bronze: St Austell - *Proper Job* (Cornwall)

STRONG BITTERS

Gold: Beeston - *On the huf* (Norfolk)
Silver: Marble - *Dobber* (Greater Manchester)
Bronze: Castle Rock - *Screech Owl* (Nottingham)

SPECIALITY BEERS

Gold: Growler Brewery, Nethergate - *Umbel Magna* (Suffolk)
Silver: Saltaire - *Triple Chocolate* (West Yorkshire)
Bronze: Conwy - *Honey Fayre* (Conwy)



r Festival 2013

AND THE... CHAMPION WINTER BEER OF BRITAIN

(from category winners announced in January 2013)

ELLAND - 1872 Porter (West Yorkshire)

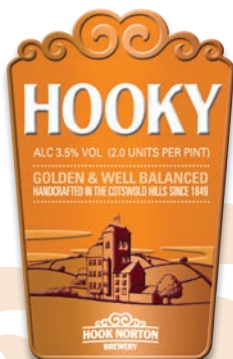
BARTRAM'S - Comrade Bill Bartram's EAIS Stout (Suffolk)

KELBURN - Dark Moor (Old Ale/Strong Mild) (Glasgow)

HOG'S BACK - A over T (Barley Wine/Strong Old Ale) (Surrey)



**SO NOT ONLY FOR THE WIDEST CHOICE AROUND, BUT ALSO
THE CHAMPION BEER OF BRITAIN GET YOURSELF TO THE GREAT
BRITISH BEER FESTIVAL NEXT YEAR....!**



Have you heard the Lion roar?

At Hook Norton we've got an exciting new addition to our range of great tasting beers. Visit our tasting bar, open Monday to Saturday 9.30am – 4.30pm, to try Lion - pride of the Cotswolds. Brewery Tours run twice a day Monday to Saturday at just £11.50 per person including a half hour tutored tasting - definitely not to be missed! For more information visit our website.

The Brewery, Hook Norton, Oxfordshire, OX15 5NY 01608 730384 e: vc@hooky.co.uk

Open Monday to Saturday 9.30am - 4.30pm all year round

**HOOK NORTON
BREWERY**

HANDCRAFTED IN THE
COTSWOLD HILLS SINCE 1849

www.hooky.co.uk



Summer Pub of the Season

The Gate Inn, Brailles

Recipe for success: Take a couple of well known and much loved local figures with a love of good pubs and good beer, move them into a traditional village local and let them get on with it. Sit back and wait for plaudits.

Congratulations to Ian Merivale and Anne Simpkins who, after just 18 months at **The Gate Inn**, Upper Brailles, have been voted Shakespeare CAMRA's Summer 2013 Pub of the Season. An award certificate was presented by CAMRA's Julian Stobinski in front of an appreciative gathering of branch members, locals and a few passing cyclists who celebrated in style by drinking plenty of *Old Hooky*, straight from a cask on the bar, (other beers on offer included *Hooky Mild*, *Hooky Original* and a changing guest on cask, and Weston's *Old Rosie Cider*). It's sometimes difficult to put your finger on exactly what elevates a pub from 'good'

to 'something special'. Great beer is an obvious must and presents no problem as Ian and Anne have plenty of experience running other pubs in the area and Ian has previously brewed commercially, (and still runs a brewing 'master class' for anyone interested). Add to good beer and food, a genuinely warm and friendly welcome, traditional pub games, community services like a 'book swap' and a wealth of local information for walkers and cyclists, (no doubt a result of Ian's years as 'footpaths officer' for Warwickshire) and you're starting to get there. For the final ingredients add a lovely 18th Century local



stone building, with timber beams, a real fire set in a stone hearth, set it in the heart of an Area of Outstanding Natural Beauty and put it all just 6 miles from where it's beers are brewed.

Thank you Hook Norton for the excellent beers and thank you Ian and Anne for keeping them so well and giving us a great place to enjoy them.

(*The Gate Inn* is on the B4035 Banbury to Shipston-on-Stour road, about 3 miles east of Shipston, www.thegateatbrailles.co.uk)

Quiz Night every Sunday and Poker first Wednesday of the month

- Three Real Ales
- Real Cider - Hogan's "Picker's Passion"
- 5 Star Food Hygiene Rating
- Cask Marque

Food served

Traditional pub food & Sunday lunches
Mon-Sat: 6-9pm :: Sunday lunch: 12-3pm

THE COACH & HORSES
Harvington WR11 8NJ

Tel: **01386 870249**

www.coachandhorsesharvington.co.uk

Opening times:

Mon-Fri 5pm to 12.00 Sat. 12-12 :: Sun. 12-11.30

**Function
Room
& Skittle
Alley**



Shakespeare
CAMRA
Pub of the
Season
Spring 2013



**Outside
Catering
& Mobile
Bar**

GOOD BEER GUIDE 2014... AVAILABLE NOW!

The Campaign for Real Ale's (CAMRA) best-selling beer and pub guide is back for 2014.

Fully updated with the input of CAMRA's 150,000 members, the Guide is indispensable for beer and pub lovers young and old.

This edition includes:

- Details of 4,500 real ale pubs around the UK
- The only complete listing of all the UK's real ale breweries available in print
- Easy-to-use listings that make finding a great pub and a good pint simple
- A 'Beer Index' that helps you find your very own perfect pint

Buying the book directly from CAMRA helps us campaign to support and protect real ale, real cider & real perry, and pubs & pub-goers.

The new Guide is available now and you can order your copy using the form below.



HOW TO ORDER

Post: Complete the form on this page and send to: CAMRA, 230 Hatfield Road, St Albans AL1 4LW

Phone: To order by credit card please phone 01727 867201 during office hours*

Online: Please visit www.camra.org.uk/shop*

Your details (please complete in BLOCK CAPITALS)

☐ I wish to buy the 2014 Good Beer Guide for **£11** (CAMRA Members only) plus p&p

☐ I wish to buy the 2014 Good Beer Guide for **£15.99** plus p&p

Postal Charges†

UK £2.00

EU £5.00

Rest of the World £7.50

Name

Address

Postcode

Phone Number

CAMRA Membership Number

☐ I wish to pay by cheque (payable to CAMRA). **Please remember to add postal charges to all orders**

☐ Please charge my Credit/Debit card. Please note that we are unable to accept payment via American Express.

Card Number

Expiry date

Validation number (last 3 numbers on reverse of card)

Name of cardholder

Signature

*Further discounts available by phone or visit www.camra.org.uk/gbg

†Please note postal charges stated apply to orders for one copy of the *Good Beer Guide 2014* only. Full details available at www.camra.org.uk/shop



CAMRA
WARWICKSHIRE
COUNTY
PUB OF THE YEAR
2012

THE NORMAN KNIGHT



The Norman Knight is open seven evenings per week and Tuesday to Sunday lunchtimes serving a choice of up to seven real ales including several brewed on the premises at our award winning Patriot Brewery plus two real ciders and Perry.



Patriot Brewery



With real log fires in both bars during winter months The Norman Knight is a perfect place to unwind and relax, with its enviable position overlooking Whichford village green in the rural Cotswolds district and an in area of Outstanding Natural Beauty.



Popular with walkers and cyclists throughout the year and with our Caravan Club approved CL site at the rear of the pub why not make a weekend of it.



Not only do we serve well kept ales and ciders we also have an eclectic and regularly changing wine list overseen by our qualified wine and beer sommelier Richard which of course leads us on to our fantastic restaurant overseen by our well loved French Chef Jean-Michel.



Jean-Michel has pulled together a well balanced menu combining pub classics interlaced with traditional French and more modern dishes. Regularly changing menus and specials all cooked fresh using locally sourced and seasonal ingredients with plenty of choice means that you will be spoilt for choice either at lunch or for dinner.



Live music features throughout the year covering all musical tastes – check out our website for all the up to date menus, opening times and music, or follow us on Facebook or Twitter @thenormanknight.

THE NORMAN KNIGHT WHICHFORD NEAR SHIPSTON-ON-STOUR WARWICKSHIRE
TELEPHONE 01608 684621 WWW.THENORMANKNIGHT.CO.UK

Brewery News

Whale Ale

Where to start! The boys at Whale have been very busy and demand increases month on month as they continue to pound the streets promoting their beer, bringing it to a pub near you. This time we can report that they have won a seasonal contract for guest supply into the Nicholson's chain - part of the M&B group. This along with other demand has seen them already increasing their equipment, investing in an extra 10 barrel fermenter and taking brewing to 4 times a week - amounting to around 20 barrels!

Whilst ever keen to keep the business growing, Tom & Ed at Whale are always keen to remember how it all started - not too long ago and were pleased to accept an invite to No10 Downing Street to meet with Prime Minister, David Cameron helping to promote the start-up loans scheme backed by the government. Of course it would have been rude not to have a tasting session as well! (see front cover, if you read as a lefty like me from the back!)

And finally if they've not been busy enough brewing and supplying lots of ale festivals, you can now get *Pale Whale* in 330ml bottles. Keep an eye out in off licenses and farm shops near you!

Purity

Well the wait is over! Saturday 14th September was the date set for the ceremonial opening of the new state of the art £1.5m brewing facility, which will be crucial to helping the company meet its ambitious growth plans. There was a healthy crowd of



distinguished guests, brewing royalty and beer officianados (I am counting myself in the latter) being plyed with copious amounts of beer and burgers - and the weather was also on our side. After a fine speech by Paul Halsey which would not have been out of place at the Oscars, making somewhat of a habit of this now Keith Bott, SIBA Chairman, was guest of honour to cut the ribbon on the plant as he did 8 years ago back in 2005. This new plant is a semi-automated Braukon brewing system, which was imported from Germany. It will allow Purity to produce the equivalent of 140,000 pints of beer per week, which will treble capacity compared to the facility it replaces.

Already out there is *Longhorn IPA 5%*, their first craft keg beer but more exciting will be a cask beer coming soon to go along side the staple favourites - I think a long awaited offering by many.

A combined effort - a new pub in Birmingham from Purity...

Some of the biggest names in the Midlands' cuisine and brewing have come together to create a new craft beer bar in Birmingham. Simpsons chef-patron Andreas Antona, Purity Brewing Company managing director Paul

Halsey and former Mitchells and Butlers director Martin Hilton have joined forces to create **Pure Bar and Kitchen** in Waterloo Street, Birmingham city centre. The company aims to tap into the growth of craft and cask beer by offering a range of ales accompanied by suitable food. The first bar will create dozens of jobs, but the trio have plans to develop a further four sites within five years. The team have all invested their own cash, but have also secured potential funding from the Birmingham Post Growth Fund, to amass more than £450,000 for the enterprise.

The team are quoted as saying..
"Cask beer is growing by something like

continued over page



Brewery News

15 per cent a year, and craft beer enjoyed a rise of 79 per cent just in the last year. "A lot of the pubs across the country, and in Birmingham, are selling just the standard products – Carling, Carlsberg, Stella Artois – this is going to be something completely different." This new venture is set to open this winter, with a date still pending.

Wye Valley Brewery wins Silver at International Beer Challenge

Wye Valley Brewery

has been awarded a Silver medal for Dorothy Goodbody's *Country Ale* at the International Beer Challenge 2013. This competition is now in its 17th year and rewards quality and celebrates excellence. With entries from over 30 countries, the competition is tough. Judges study each beer in turn, considering the appearance,



the aroma, the taste and the finish, before discussing their findings with other table members and reaching a consensus on which medal to award.

The panel of judges consisted of well known beer writers, publicans and brewers, they awarded 38 gold medals, 89 silver and 155 bronze

Look out in October for Dorothy Goodbody's new *Harvest Hop* With the hop harvest complete, Dorothy will be treating us to a beer simply bursting with the aroma and flavours of freshly picked, un-kilned 'green' Fuggles hops.



Gold for Butty Bach

We are proud to announce that *Butty Bach* was judged



Gold medal winner at the Ludlow Food Festival.

Every year The Ludlow Food Festival runs an ale trail sponsored by Wye Valley Brewery, and the beers are judged by the people taking part and by a panel of professionals. This year *Butty Bach* was judged Gold by the professionals!

Patriot Brewery



We hear exciting news from Patriot that brewing will be gearing back up after a somewhat more subdued period after Tim Young's brewing partner had sustained a serious back injury. Tim hopes to concentrate fully on his beers and return supply to previous levels supplying **The Norman Knight** and many other establishments.

Cider News HOGAN'S CIDER

Our local cider producer **Hogan's** goes from strength to strength. We are pleased to be reporting yet again Hogan's shipments are literally going worldwide!! They have waved goodbye to more pallets to Hong Kong, USA and Russia. Demand is such that new transport methods have been called for which earns them some great green credentials. And if this demand and success is not enough, they were awarded first place for the people's choice for their medium cider at the Three Counties Cider and Perry competition.

You will also be able to partake in a drop or two at this year's Birmingham Christmas market. Look out for their new mulled cider – bringing you the English orchard with that exotic spice blend for a superb winter warmer.

And to round off, this looks to be a bumper harvest so look out for more excellent cider next year!



HAVE YOU TRIED OUR AWARD-WINNING CIDERS YET?

OUR BAG-IN-BOX IS PERFECT FOR LONG SUMMER DAYS. MADE IN THE MALVERN HILLS FROM 100% FRESH PRESSED ENGLISH CIDER APPLES AND PRECIOUS LITTLE ELSE, HOGAN'S BRINGS YOU THE TRUE TASTE OF THE ENGLISH ORCHARD.



HAZY DAISY 3.9%

A MEDIUM-SWEET, EASY DRINKING CIDER PERFECT FOR LONG LAZY DAYS.



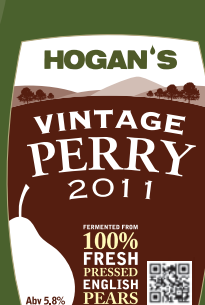
PICKER'S PASSION 5.3%

A FANTASTIC MEDIUM CIDER WITH A WARM HONEY COLOUR, APPELTY AROMA AND FRESH FINISH.



PANKING POLE 6.2%

A QUIRKY, DRY CIDER WITH TYPICAL CIDER APPLE BITTERNESS AND FRUIT AROMAS, RICH AND COMPLEX.



VINTAGE PERRY 5.8%

A SMOOTH, MEDIUM PERRY WITH A DELICATE, FRESH AROMA AND A FRUITY BITTER-SWEET FINISH.

HOGAN'S AWARD WINNING CIDERS AND PERRY ARE AVAILABLE IN BOTTLES, BAG-IN-BOX AND KEG.

For more information and to place an order call **01789 488433** or email **allen@hoganscider.co.uk**

Lower Barn Buildings, Haselor, Alcester, B49 6LX
www.hoganscider.co.uk

HOGAN'S CIDER

FERMENTED FROM

100% FRESH PRESSED ENGLISH APPLES

Shakespeare CAMRA's 7th

WHAT CAN WE SAY - THANK YOU!

You helped make this year's festival an absolute success, even the weather was with us too. After many months of planning, the 7th Beer & Cider festival was upon us. Friday lunchtime started with a good trickle of people to sample what was nearly 5000 pints in the form of 58 ales and near 30 ciders and perries.

A special event would not be special without an honoured guest to declare it open and this year we welcomed Stratford's Mayor - Diane Walden and her aide who sampled an ale or two and whilst with us, they fulfilled a long standing request and became CAMRA members also. Working to an elected theme of "four corners & local" we showcased beers from far and wide with an excellent turn out from our local breweries - **Purity, North Cotswold, Whale Ale and Patriot** to name but a few. To ensure our choices represented good taste, the volunteer committee were asked for their input on the final beer choice. As has become tradition, we were paid

a visit from the Hook Norton dray who made their way into Stratford to make sure you all knew about the festival. The lovely **Dark Star American Pale Ale** was the first ale to be drunk dry, followed by **Hogan's Haisy Daisy** as the first cider. Voted by you was the beer of the festival - **Bristol Beer Factory Milk Stout** 4.5%, a multi award winning smooth stout with smooth chocolatey sweetness and balancing coffee bitterness with hints of dark fruits. This year again we welcomed a charity close to many people - The Shakespeare Hospice, who sold tickets for their big raffle of the year. Alongside this, all your unused tokens that you kindly donated on your way out were counted up - last

year we raised £500, this years total is still being finalised. On Saturday we had the wonderful "Swing from Paris" and "The Stuart Bishop" playing for us, albeit The Stuart Bishop act was playing to a somewhat reduced audience due to all the beer having been drunk by tea-time as we had enjoyed a record attendance of over 1500.

I would like to make three big Thank You's...

The large number of volunteers - however they may have helped from those who spent dark winter evenings planning to those mopping floors long



Beer & Cider Festival

Not
a drop to
spare!



CAMRA cheque presentation to
Shakespeare Hospice



Stratford's Mayor signs up to CAMRA

after you'd all gone home. We could not do it without you.

Our sponsors - who we greatly appreciate however they support us, it all helps! It comes in the form of shirts, glasses, beer sponsorship and many other ways.

And finally you the customer - although we ran out before the end, we do appreciate your support and choice in coming to sample beers at the festival. Hopefully next year we will bring you something bigger and even better.

Julian Stobinski, Festival
Organiser, refuels the Hook
Norton shires...



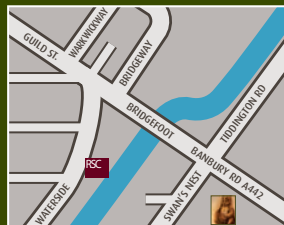


The Bear

Free House & Kitchen



- ✓ Now 8 real ales
- ✓ 28 wines by the glass
- ✓ premium draught lagers
- ✓ fabulous pub food
- ✓ Sunday roast



Telephone: 01789 265 540
Swan's Nest, CV37 7LT
5 minutes walk from the RSC



The march of the Micropub

What started as a small idea is now becoming a big movement.

When Martin Hillier spoke at CAMRA's AGM in Eastbourne in 2009 about his concept of a micropub few would have been predicted that three years later 22 are now listed on the Micropub Association website and many more are planned.

Martin opened, the **Butcher's Arms**, Herne, Kent in November 2005. It was the country's first micropub which has gone on to become the template for many others. It all started because of the 2003 Licensing Act which made it surprisingly easy to secure an on-licence for pretty much anywhere — in an old shop, a post office, garage, in a front room of a house or as in the case of the Butchers a former florist. His concept is simple — the space for the

pub needs to be small in size, have low overheads and into the mix is thrown good conversation and draught beer. And the Butchers is small. There is only seating for 12 people in a space about three metres square. There is no bar and the cellar is squeezed into a corridor on the way to the loo. The pub is only open five days a week, yet it sells more than 500 pints a week and is making a profit.

His Eastbourne presentation had quite an effect. Within months CAMRA member Phil Ayling from Newark had opened the **Just Beer** in an empty art gallery.

Also in the Eastbourne audience was Pete Morgan from Hartlepool who opened the **Rat Race** in a tiny taxi office at Hartlepool railway Station in November 2009.

Soon after the **Marlpool** in Heanor, Derbyshire opened in a former Methodist chapel pulpit. And already this year six have

opened — including a third in Herne Bay the **Bouncing Barrel**.

And now according to Stu Hirst, who with Martin set up a trade association for micro pub owners, many more are planned. Shakespeare CAMRA country looks set to get its very own micropub in Stratford-upon-Avon to be known as **The Stratford Ale House**, with a back to basics no nonsense establishment returning to a one-room local. It's hoped that Bill O'Brien who lives nearby can set this up in Greenhill Street and be displaying and serving the beers sourced from locally-sourced smaller breweries, there's even the hint of a discount for paid up CAMRA members too... Watch this space! Information on how to set up your own micropub can be found at www.micropub.co.uk & <http://micropubassociation.co.uk/>
Taken from CAMRA; published on 17th July 2013 by Tim Hampson



The Boars Head

Visit
our website
to see our
menus

Telephone 01789 840533

www.theboarsheadhamptonlucy.co.uk



The Boars Head is an award winning cask ale pub situated in the centre of Hampton Lucy, Warwick. We have real ale from local and major brewers around the country. Wines are chosen to complement our food, or just enjoy with friends. The menu is in place seven days a week and blackboards have daily specials and desserts. A traditional roast is served Sunday lunchtimes. We aim to achieve the highest standards in a friendly atmosphere. The open fire is a great place to relax in winter and our walled garden in summer.

We are open every day serving food lunchtimes and evenings (except Sunday night) and special evenings and events will be available on the website.

This year we are pleased to announce the birth of a new local brewery.

Church Farm Brewery produces quality handcrafted ales at their farm in Budbrooke, Warwick, using exclusively English grown ingredients and traditional small scale brewing methods. If you would like to place an order of 1 or more firkins, or find out more about the range of ales on offer, please telephone 01926 411569.

The Boars Head will have one or more of their brews on the bar regularly for customers old and new to sample. We also provide 2 pint containers to take home if you want to continue your evening with fine cask ale.



THE BOARS HEAD

Find us at Church Street, Hampton Lucy, Warwickshire CV35 8BE



Traditional 17th Century
Inn offering Home
Cooked Meals,
Real Ales and
Traditional Pub Games

En-Suite
Accommodation and
Function Room for
Weddings, Parties and
Business

Open

Monday and Tuesday
4.00pm - 11.00pm

Wednesday and Thursday
11.45am - 2.00pm and
4.00pm - 11.00pm

Friday, Saturday & Sunday
All day 11.30am - 11.00pm

Happy Hour

4.00pm till 6.00pm
every midweek afternoon

NO FOOD

Monday, Tuesday and Sunday evening

The Wheatsheaf Inn

High Street, Old Badsey, near Evesham, Worcs. WR11 7EJ

Telephone: 01386 830380



The Fleece Inn

Bretforton WR11 7JE

The quintessential English Pub
- owned by The National Trust
- run with love of tradition

Local Regular & Guest Cask Ales & Cider

*Mediaeval Thatched Barn available to hire for
Functions, Events and Weddings*

*Every Thursday from around 8.45pm -
Folk Night - everyone is welcome*

For further details contact Nigel on 01386 831173

Email: nigel@thefleeceinn.co.uk www.thefleeceinn.co.uk

Check out the website for forthcoming events



Closing date for copy for the next issue of **Shakespeare** is **30th November 2013**

The Turks Head

Freehouse - Pub - Dining

- Four Real Ales
- Six Draught Craft Beers
- Nine Wines By The Glass
- Delicious pub grub
- Open Fires
- Lovely Walled Garden



4 High Street Alcester B49 5AD Tel: 01789 765948 www.theturkshead.net

THE CROWN AND TRUMPET INN

CHURCH STREET - BROADWAY - WORCESTERSHIRE - WR12 7AE



Situated just behind the village green of Broadway a traditional 17th century Cotswold Inn. We have four seasonally brewed beers from the local Stanway Brewery. Including a selection of other guest local ales.

Just off the Cotswolds Way providing accommodation for weekend and midweek breaks with monthly Thursday **Jazz and Blues** Evenings.

Serving Lunch and Dinners all through the week using locally produced ingredients to make seasonally cooked home made dishes



Shakespeare's CAMRA pub of the year 2012

For Summer the Crown and Trumpet Inn is proud to present our four featured beers shown below as well as other welcome guest local ales.



Cotswold Spring Brewery

Codger - 4.2%

A dry, crisp, chestnut, perfectly balanced beer with a subtle hoppy finish.

<http://www.cotswoldbrewery.co.uk>



Stroud Brewery

Tom Long - 3.8%

Silver at SIBA National Beer Competition, Champion Bitters (up to 4.0%) Amber session beer with spicy citrus aroma. Good body for low ABV.

<http://www.stroudbrewery.co.uk>



Stanway Brewery

Cotteswold Gold - 3.9%

A light refreshing ale with a delicate golding hop. The Summer beer, Cotteswold is the old name for the Cotswolds.

<http://www.stanwaybrewery.co.uk>



Butcombe

Butcombe Bitter - 4.0%

The West Country's favourite beer derives from pure Mendip Spring Water...notably bitter, clean tasting, refreshingly dry and distinctive.

<http://www.butcombe.com/>

01386 853202 - info@cotswoldholidays.co.uk - <http://www.cotswoldholidays.co.uk>

Real Ale of Old England

with Alan Whitbread, Folk Singer & Concertina Player,
Alcester Court Leet Ale Taster www.alanwhitbread.co.uk



If you've been following my quarterly articles about ale songs, you may be thinking: "What's the point of these old songs? The history may be interesting (sometimes!) but they're not relevant today." Well, that's where you're wrong, in the case of this song anyway!



Skinner's Brewing Company of Truro in Cornwall wanted a publicity song as part of their Betty Stogs advertising campaign. So what did they do? They turned to a traditional Cornish song Sweet Nightingale and, with new words and a chorus, they turned it into a song for their Betty Stogs look-alike to sing at festivals and events and they called it Real Ale of Old England.

I came across the song when I was singing at Falmouth International Shanty Festival in June 2013. It's a cracking event, being the biggest free shanty festival in the world, with 30+ shanty groups singing shanties & sea songs and raising bucket loads money for the RNLI. This year they (we!) raised over £10,000.

The song *Sweet Nightingale*, which is also known as *Down in Those Valleys Below*, probably dates from the 17th century and it is said to be a translation from the ancient Cornish tongue.



● Betty and me at the Falmouth Shanty Festival June 2013

The words were published in Robert Bell's *Ancient Poems of the Peasantry of England* (1857) and the tune was collected by the Rev Sabine Baring-



● Me singing on stage in front of a Betty Stogs banner

Gould (what a great name!) from EG Stevens of St Ives in Cornwall in c1900. Baring-Gould commented that "a good many old men in Cornwall" gave him this song and it was "always to the same air". This may explain why it is still a popular song today. Also, the old men said that "it is a duet". The lyrics in one of the songs in Sir Thomas Arne's ballad opera *Thomas and Sally* (1761) has similarities with the words given by Bell but Arne's tune is quite different. (Arne was famous for composing *Rule Britannia*!)

Of course, the song is not the innocent pastoral idyll that it seems at first

glance: to "hear the nightingale sing" is an euphemism for making love, in the same way that the "cuckoo's nest" is an euphemism for the region of such activity!

By the way, the tasting notes for Skinner's Betty Stogs in CAMRA's GBG 2013 describe it as "Refreshing copper ale with a balance of citrus hops & apple fruit, sweet malt & bitterness. Faint aroma of malt & hops. Bitter finish is slow to develop but long to fade. (OG 1040, ABV 4%)". I certainly enjoyed a pint or three during my stay in Cornwall! Bottoms up!

The old and new songs are given here. You can see the similarities (and the differences!) between the two songs.

If you want to hear and join in with the choruses of such traditional songs in the Shakespeare CAMRA area, try the following places:-
second Tuesday at **The Cottage of Content** at Barton (over the river from Bidford) B50 4NP; Every Thursday at **The Fleece** at Bretforton (a NT property in the GBG) WR11 7JE; first Sunday at **The White Horse** at Ettington CV37 7SU; second Sunday at **The Blue Boar** at Temple Grafton (near Binton) B49 6NR; third Sunday at **The White Bear** at Shipston on Stour CV36 4AJ; and fourth Sunday at **The Mary Arden** at Wilmcote CV37 9XJ.

...REAL ALE OF OLD ENGLAND

Come sit yourself down
With me on the ground
While I tell you an old Cornish tale
How from over the sea
From the Isle of Jersey
Came Skinner, the brewer of a-a-a-a-a-a-a-
a-a-a-ale
Came Skinner, the brewer of ale
Real ale of old England
From Tamar to Tyne
But Betty's a fine Cornish gal
For west of the Tamar
The real ales of fame are
Brewed by the banks of the Fal

Pretty Betty don't fail
For we'll carry your pail
Your pail full of pale Cornish ale
Oh Queen Betty Stogs
In your corsets and dogs
You're a delicate, dainty female

There's a lady called Betty
More powerful than pretty
An iconic marketing ploy
She's lovely large tits
But there's male gender bits
Hidden under her skirts – she's a boy!

The stories are legion
Of a singing Norwegian
Who at once fell in love with Miss Stogs
And she took a liking
To the handsome young Viking
With a body like Noggin the Nog

King Arthur lived here
And he knew of his beer
He drank Stogs from the true Holy Grail
From Facebook to Twitter
She's Britain's best bitter
Betty Stogs is the queen of real ale

...SWEET NIGHTINGALE

Sweetheart, come along
For to hear the fond song
The sweet notes where the nightingale flows
For hear the fond tale
Of the sweet nightingale
As she sings in the valley bel-o-o-o-o-o-o-
o-o-o-ow
As she sings in the valley below

Sweetheart, never fail
I shall carry your pail
And it's off to your cottage we'll go
For to hear the fond tale
Of the sweet nightingale
As she sings in the valley below

Pray leave me alone
I have hands of my own

And along with you, sir, I won't go
For to hear the fond tale
Of the sweet nightingale
As she sings in the valley below

Come sit yourself down
With me on the ground
On the banks where sweet primroses
grow
And you'll hear the fond tale
Of the sweet nightingale
As she sings in the valley below

So I set myself down
Right there on the ground
On the banks where the primroses grow
For to hear the fond tale
Of the sweet nightingale

As she sings in the valley below

This couple agreed
To be married with speed
And it's off to the church they did go
She's no longer afraid
For to walk in the shade
Or to lie in the valley bel-o-o-o-o-o-o-
o-o-o-ow
Or to lie in the valley below
For to hear the fond tale of the sweet
nightingale
As she sings in the valley bel-o-o-o-o-o-o-
o-o-o-ow
As she sings in the valley below

If you are a CAMRA member in the Shakespeare branch, you should receive a copy of Shakesbeer through the post (one per household). If you prefer, a PDF copy can be sent to you by email - just let Shakesbeer know. If you live outside the area or are not a CAMRA member but would like to subscribe and receive copies through the post, then please send an email to shakesbeer@shakespearecamra.org.uk for further details.

The Editor reserves the right to amend or shorten contributions for publication. Copyright © Shakespeare CAMRA 2013.

Disclaimer: The views expressed in this publication are those of individual contributors, and are not necessarily the views of the Shakespeare Branch or The Campaign for Real Ale Ltd. Shakespeare CAMRA accepts no liability in relation to the accuracy of articles or advertisements, readers must rely on their own enquiries. It should also be noted that acceptance of an advertisement in this publication should not be deemed an endorsement of quality by Shakespeare CAMRA.

Local Trading Standards Offices: Warwickshire County Council, Old Budbrooke Road, Warwick, CV35 7DP
Worcestershire County Council, County Hall, Spetchley Road, Worcester, WR5 2NP

Design and print by Bloomfield Ltd., Bidford-on-Avon, Warwickshire. Tel: 01789 490528
www.bloomfieldprinters.co.uk

Subscribe to
Shakesbeer...

REAL ALE

REAL GOOD

GLASS
WHITE WINE*

131
CALORIES



BOTTLE
ALCOPOP*

179
CALORIES

2.1
UNITS

2.1
UNITS

GLASS
RED WINE*

119
CALORIES

1.1
UNITS

½ PINT
REAL ALE*

85
CALORIES

Real ale isn't nearly as packed with calories as you might think. Plus, it's brewed using simple, wholesome ingredients such as water, hops and barley.

*Our examples use typical measures and strengths: real ale at 3.8% alc, 175ml wines at 12% alc, 275ml alcopop at 5% alc.

GET REAL! ENJOY REAL ALE.

WWW.CAMRA.ORG.UK

THE LORD- NELSON

Free House - Newly Refurbished
4 Traditional Ales + Draught Craft
9 Wines By The Glass
Open Fire & Log Burner
Regular Acoustic Music
Quiz Night Mondays (coming soon)
Patio & Beer Garden
Tapas served Thu - Sat 6-9pm
Sundays Roasts 12 -4pm
Free Wi-Fi



Tapas

Served 6-9pm Thursday, Friday & Saturday



69 Priory Road - Alcester - Warwickshire - B49 5EA

Tel: 01789 509148

www.lordnelson.biz



**Situated in the heart of the
famous Vale of Evesham...**



*Open 11.00am til 11.00pm everyday for
traditional cask ales, real ciders and fine food*

The Round of Gras

Bretforton Road, Badsey, Evesham

Tel: 01386 830206

www.roundofgras.co.uk



CARVERY SPECIAL

Midweek £5.50

Tuesday, Wednesday
& Thursday lunch and
Wednesday evening

Sunday £7.50

12.00pm - 8.00pm

Good Beer Guide Pub Selection

Have you wondered how CAMRA selects pubs for the annual Good Beer Guide? Each CAMRA branch is responsible for the entries in its area within the county and each listed pub must consistently serve real ale (and real cider if offered) of good quality.

To help us do this, we collect beer quality information through CAMRA's National Beer Scoring System (NBSS) in which members are asked to contribute scores for pubs throughout the year. It is easy to score your beers in NBSS. Log in to CAMRA's online pub guide, WhatPub (<http://whatpub.com>), using your membership number and the same password that you use to enter the CAMRA national website. Search for the pub and enter a score for each beer that you drank in the Submit Beer Scores panel on the right of the screen. There is plenty of help

and information about NBSS on the Beer Scoring tab. A version of WhatPub optimised for use on a smart phone is due to be launched in August and a downloadable app will appear later, so you can score your beer in the pub while you drink it! If you don't have online access at all, then ask your NBSS Coordinator at a branch meeting for paper forms and we will enter your scores for you. Having collected thousands of beer scores over the year, we generate a report in January giving the average, best and worst scores for each pub and a confidence factor

based on the number of scores received. The Branch Committee uses these data to draw up a list of eligible pubs with the highest average score, supplemented by other sources of information, and then visits them to update the pub details ahead of a selection meeting in February. All branch members are invited to that meeting at which we select our quota for the next Good Beer Guide.

To make this work better, we need many more members to enter their scores. We value the opinions of all members whether active or not and we need as many opinions as possible for as many pints in as many pubs as possible. This is so we can have confidence in the statistics. We ask members to score the pubs continually not just once or twice. NBSS works

The Holly Bush

bar • restaurant • conferences • functions

37 Henley Street • Alcester • Warks • B49 5QX

tel: **01789 762482** fax: **01789 766411**

email: **thehollybushpub@btconnect.com**

8 Real Ales on continuously including Doom Bar, Black Sheep, Uley Bitter, Purity Gold & Purity Mad Goose or UBU with guests

Delicious Traditional & Contemporary Food

Beautiful Gardens

Functions, Private Dinner Parties, Conferences

Live Music on Friday & Saturday nights

Open 7 days a week 12 noon till late

Food served Monday to Saturday

Lunch 12.00 to 2.30pm • Sunday Lunch 12.00 to 4.00pm

Dinner Tuesday to Thursday 7.00pm til 9.00pm

Friday and Saturday 7.00pm till 9.30pm



Locally Produced, Fresh, Seasonal Food with Fantastically Conditioned Ales and a Great Atmosphere

Debbie and the team will welcome you and ensure your stay is enjoyable whilst behind the scenes our four very talented chefs led by Sam take great pride in sourcing only the finest quality local produce and prepare all of our food freshly on the premises. All our menus are available throughout our Bar and Restaurant areas as well as our Patio & Gardens. We regularly change our menu to ensure we use fresh seasonal produce and the specials boards change every few days. **The Original Golden Cross Faggots Are Back!!** People used to travel from far and wide for The Golden Cross Faggots. We have secured the original recipe and have brought them back, the only thing missing are the dolls to watch you eat them (for those that remember) **DON'T MISS OUT!**



The Golden Cross, Wixford Road, Ardens Grafton, Warwickshire B50 4LP

Tel: 01789 772420 www.thegoldencross.net

OPENING TIMES

BAR 12pm to 3pm & 5pm to 11pm Monday to Thursday;

12pm to 12 am Friday & Saturday and 12pm to 10.30pm Sunday

FOOD 12pm to 2.30p & 5pm to 9pm Mon to Fri

12pm to 9pm Saturday and 12pm to 8pm Sunday

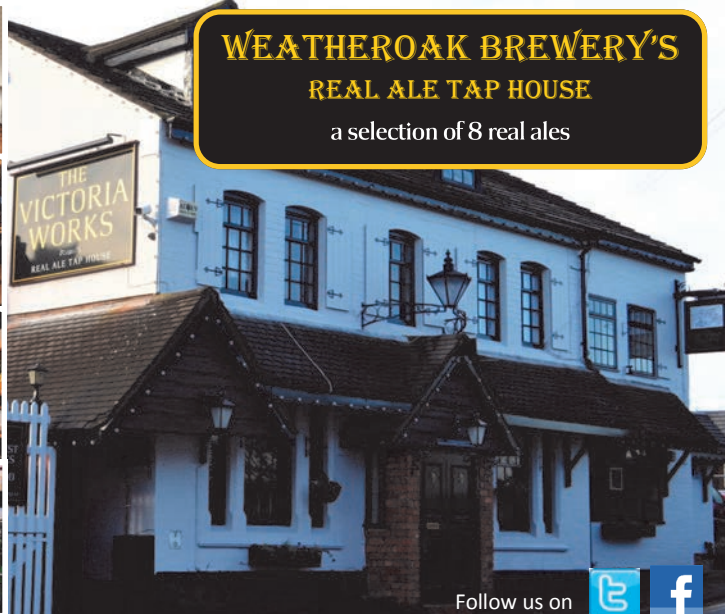
DOGS WELCOME
in the bar and
garden areas



WEATHEROAK BREWERY'S

REAL ALE TAP HOUSE

a selection of 8 real ales



Follow us on



33 Redditch Road, Studley, B80 7AU Tel: 0121 445 4411. See up and coming events at www.the-victoria-works.co.uk

LocAle



CAMRA LocAle - promoting pubs that sell locally-brewed real ale, reducing the number of 'beer miles', and supporting local breweries. CAMRA LocAle is an initiative that promotes pubs stocking locally-brewed real ale. The scheme builds on a growing consumer demand for quality local produce and an increased awareness of 'green' issues.

The CAMRA LocAle scheme was created in 2007 by CAMRA's Nottingham branch which wanted to help support the tradition of brewing within Nottinghamshire, following the demise of local brewer Hardys and Hansons. Following on from our Locale feature in Shakesbeer Spring 2013 we will be keeping you up to date on the most recent Locale accredited pubs. Below are our most recent locale conscriptors and so you should be able to track down a pint of beer produced with 30 miles of that pub.

Everyone benefits from local pubs stocking locally-brewed real ale...

- Public houses as stocking local real ales can increase pub visits
- Consumers who enjoy greater beer choice and diversity
- Local brewers who gain from increased sales
- The local economy because more money is spent and retained locally
- The environment due to fewer 'beer miles' resulting in less road congestion and pollution
- Tourism due to an increased sense of local identity and pride - let's celebrate what makes our locality different

Accreditation is at the sole discretion of the local CAMRA branch and subject to the licensee agreeing to the following...

- That they will endeavour to ensure at least one locally brewed real ale, as defined by the local branch, is on sale at all times
- Only real ale, as defined by CAMRA, can be promoted as a CAMRA LocAle
- Where the standard of real ale sold falls below an acceptable quality, accreditation will be withdrawn
- That accreditation can be withdrawn at any time at the discretion of the local branch
- That should accreditation be withdrawn, or should the licensee withdraw from the scheme, all LocAle publicity material must be removed from the pub and the licensee cease using the CAMRA LocAle logo.

Definition of Local

The Sustainable Communities Act, which CAMRA strongly supports, provides a definition of local as up to 30 miles from the point of sale. CAMRA recommends that the distance is calculated from the pub to the brewery and should be based on the shortest driving distance. Real ales from regional and national breweries as well as from microbreweries can be

regarded as "local" if they are brewed within what the branch has decided as being the local area.

How do I find a LocAle Pub?

Pubs which have been given LocAle status by their local CAMRA branch can display the LocAle sticker on their windows/doors. The



stickers have the year for which they have been accredited as LocAle pubs by their branch. They may also have posters up in the pub and on the pumps that are serving locally brewed beers there will be LocAle pump clip crowners.

To find a locale accredited pub in this area see the branch website and look for the <http://www.shakespearecamra.org.uk/rainshc/>

NEW! Fox & Hounds Great Wolford :: Howard Arms Ilmington :: Red Lion Little Compton :: Red Lion Long Compton :: George Hotel Lower Brailles :: White Hart Newbold-on-Stour :: Peacock Oxhill :: Black Horse Shipston-on-Stour :: White Bear Shipston-on-Stour :: Plough Stretton-on-Fosse :: Gate Inn Upper Brailles :: Bell Inn Welford-on-Avon **EXISTING** The Fleece Bretforton Crown & Trumpet Broadway :: Castle Edgehill :: Boars Head Hampton Lucy :: Queens Head Sedgeberrow :: Coach & Horses Shipston :: The Black Horse Inn Shipston :: The Falcon Stratford :: New Bulls Head (formerly The West End) Stratford :: The Bear Stratford :: Norman Knight Whichford :: Bidford Legion Bidford :: The Golden Bee Stratford :: Armouries Arms Pathlow



Join CAMRA Today

Complete the Direct Debit form below and you will receive 15 months membership for the price of 12 and a fantastic discount on your membership subscription.

Alternatively you can send a cheque payable to CAMRA Ltd with your completed form, visit www.camra.org.uk/joinus or call 01727 867201. All forms should be addressed to Membership Department, CAMRA, 230 Hatfield Road, St Albans, AL1 4LW.

Your Details

Title _____ Surname _____
 Forename(s) _____
 Date of Birth (dd/mm/yyyy) _____
 Address _____

 _____ Postcode _____
 Email address _____
 Tel No(s) _____

	Direct Debit	Non DD
Single Membership (UK & EU)	£23 <input type="checkbox"/>	£25 <input type="checkbox"/>
Joint Membership (Partner at the same address)	£28 <input type="checkbox"/>	£30 <input type="checkbox"/>

For Young Member and concessionary rates please visit www.camra.org.uk or call 01727 867201.

I wish to join the Campaign for Real Ale, and agree to abide by the Memorandum and Articles of Association

I enclose a cheque for _____

Signed _____ Date _____

Applications will be processed within 21 days

Partner's Details (if Joint Membership)

Title _____ Surname _____
 Forename(s) _____
 Date of Birth (dd/mm/yyyy) _____

01/06

**Campaigning for Pub Goers
& Beer Drinkers**

**Enjoying Real Ale
& Pubs**

Join CAMRA today – www.camra.org.uk/joinus



Instruction to your Bank or Building Society to pay by Direct Debit
 Please fill in the whole form using a ball point pen and send to:
Campaign for Real Ale Ltd, 230 Hatfield Road, St Albans, Herts AL1 4LW



Name and full postal address of your Bank or Building Society Service User Number

To the Manager Bank or Building Society

Address

Postcode

Name(s) of Account Holder

Branch Sort Code

Bank or Building Society Account Number

Reference

9 2 6 1 2 9

FOR CAMRA OFFICIAL USE ONLY

This is not part of the instruction to your Bank or Building Society

Membership Number

Name

Postcode

Instructions to your Bank or Building Society

Please pay Campaign for Real Ale Limited Direct Debits from the account detailed on this instruction subject to the safeguards assured by the Direct Debit Guarantee. I understand that this instruction may remain with Campaign for Real Ale Limited and, if so will be passed electronically to my Bank/Building Society.

Signature(s)

Date

This Guarantee should be detached and retained by the payer.

The Direct Debit Guarantee

- This Guarantee is offered by all banks and building societies that accept instructions to pay by Direct Debit.
- If there are any changes to the amount, date or frequency of your Direct Debit The Campaign for Real Ale Ltd will notify you 10 working days in advance of your account being debited or as otherwise agreed. If you request The Campaign for Real Ale Ltd to collect a payment, confirmation of the amount and date will be given to you at the time of the request.
- If an error is made in the payment of your Direct Debit by The Campaign for Real Ale Ltd or your bank or building society, you are entitled to a full and immediate refund of the amount paid from your bank or building society.
 - If you receive a refund you are not entitled to, you must pay it back when The Campaign for Real Ale Ltd asks you to.
- You can cancel a Direct Debit at any time by simply contacting your bank or building society. Written confirmation may be required. Please also notify us.

Shakespeare Branch Diary and Beer Festival Round up



OCTOBER

Oct 15th 8pm

Branch meeting, BOARS HEAD, Church Street, Hampton Lucy, CV35 8BE

Oct 30th to Nov 2nd

Birmingham Beer Festival (see birminghambeerfestival.org.uk)

NOVEMBER

Nov 19th 8pm

Branch Meeting, THE COACH AND HORSES, Station Rd, Harvington, Evesham WR11 8NJ

DECEMBER

Dec 10th 8pm

Branch Meeting, LORD NELSON, 69 Priory Road, Alcester, B49 5EA follow by Alcester Christmas cheer walk about

See Shakespeare CAMRA web site for the latest news and updates on meetings: www.shakespearecamra.org.uk

CAMRA Branch Contacts

• Chairman: LLOYD EVANS	chair@shakespearecamra.org.uk
• Secretary: GWEN GODFREY	secretary@shakespearecamra.org.uk
• Treasurer: SUE ROSS	treasurer@shakespearecamra.org.uk
• Membership: JOHN ROSS	membership@shakespearecamra.org.uk
• Pubs: JASON NORLEDGE/KEITH BARKER	pubs@shakespearecamra.org.uk
• Campaigns: JASON NORLEDGE	campaigns@shakespearecamra.org.uk
• Cider: JOHN ROSS	cider@shakespearecamra.org.uk
• Contact: KEITH BARKER	contact@shakespearecamra.org.uk
• Editor: JASON NORLEDGE	shakesbeer@shakespearecamra.org.uk
• GBG: PETE GODFREY	gbg@shakespearecamra.org.uk
• Public Affairs: JASON NORLEDGE	publicaffairs@shakespearecamra.org.uk
• Socials co-ordinator: JOHN ROSS	socials@shakespearecamra.org.uk
• Website: KEITH BARKER	websupport@shakespearecamra.org.uk
• Young Members: TOM COYTE	BYMC@shakespearecamra.org.uk

Are you interested in joining your local Shakespeare CAMRA committee?

We would like to hear from you if you could help us to help our local members.

Do you have a few spare moments during the week you could help our local committee with organising social events - if so we would like to hear from you. Or could you assist in gathering news or assist publishing this magazine by being part of our editorial team. What about liaising with the local landlords and pubs within our branch? If so we would like to hear from you however much time you can spare in any capacity.

Please contact us if you have any questions or would like to join: chair@shakespearecamra.org.uk





The New Bulls Head

A traditional community pub serving great food
and a wide range of quality wines and ales

Great New Menus

Featuring
our renowned
"Rabbit Pie"

Wide Range of Real Ales

from brewers including,
Hook Norton &
Timothy Taylor...
regular guest beers are
always available

Live Music

Coffin Dodgers

26th October 2013

2013 Hits Collective

2nd November 2013

A Tale of Old Town

A wonderful exhibition of Photographs
and Maps telling the story of Old
Towns history, including the people
and industry that thrived there is on
display. A booklet is also available
featuring a brief walking tour.

20% off
your total bill when
Two Dine*



Offer expires 31st October 2013

*Cannot be used in conjunction with any other offers or
special event offerings. Management reserve the right to
withdraw this offer at any time.

Please present this voucher when dining.

9 Bull Street, Stratford-upon-Avon, Warwickshire CV37 6DT

Telephone 01789 268832

www.thenewbullshead.co.uk



“ ONE GOOD ROUND ”
DESERVES ANOTHER

Butty Bach is a Welsh term for **little friend** – and this smooth and satisfying premium ale has certainly made a few friends in its time. Brewed using locally grown Fuggles, Goldings and Bramling Cross hops, Butty continues to delight thirsty fans both old and new. **4.5% ABV**

[facebook.com/wyevalleybrewery](https://www.facebook.com/wyevalleybrewery) [@wyevalleybrew](https://twitter.com/wyevalleybrew)

www.WyeValleyBrewery.co.uk



SHARE OUR TASTE FOR REAL LIFE