



CAMRA
FOR
REAL ALE

Issue 71 Summer 2019

Shakespeare

Newsletter of Shakespeare branch of CAMRA - Real ale in Shakespeare Country and The Vale



Friday 24th & Saturday 25th June 2011

STRATFORD RACECOURSE
LUDINGTON ROAD CV37 9SE
www.stratfordbeerfestival.org.uk

BEER & CIDER FESTIVAL

Free entry for CAMRA members

11am to 11pm

2.00pm till 11.00pm Friday
11.00am till 11.00pm Saturday

• Over 50 real ales and ciders
• Food available at all sessions
• Entertainment on Saturday
• Camping & caravan facilities on site
• Discounted drinks £4.00 & £5.00 Friday & Saturday (members & supporters)

£10.00 ENTRY PACKAGE

Includes: 10 tokens, 1 glass, 1 programme, 1 discount for CAMRA members

Minibus Shuttle
Bus from Stratford to Ludington Road
Bus from Ludington Road to Stratford

6th Stratford-upon-Avon Beer & Cider Festival
Friday 8th June & Saturday 9th June 2012
Stratford Racecourse, Ludington Road CV37 9SE

This year's theme is... **Coastal and Local**

Over **60 Real Ales & Ciders**

Special Menu: 10 tokens, 1 glass, 1 programme, 1 discount for CAMRA members

Live Bands and Morris Men

On-site camping & caravan facilities
www.stratfordbeerfestival.org.uk

£10.00

ENTRANCE PACKAGE
Includes: Festival glass & souvenir programme
Includes: 10 tokens, 1 glass, 1 programme, 1 discount for CAMRA members

Minibus Shuttle
Bus from Stratford to Ludington Road
Bus from Ludington Road to Stratford

STRATFORD-UPON-AVON 7th BEER & CIDER FESTIVAL
Friday 18th & Saturday 19th June 2013
www.stratfordbeerfestival.org.uk

this year's theme is **Four Corners and Local!**

Over **55 Beers 20 Ciders**

Live Music! SATURDAY

On-site camping & caravan facilities

£12.00

ENTRANCE PACKAGE
Includes: Festival glass & souvenir programme
Includes: 10 tokens, 1 glass, 1 programme, 1 discount for CAMRA members

Minibus Shuttle
Bus from Stratford to Ludington Road
Bus from Ludington Road to Stratford

STRATFORD-UPON-AVON 8th BEER & CIDER FESTIVAL
Friday 13th & Saturday 14th June 2014
www.stratfordbeerfestival.org.uk

Shakespeare's Favourites

Over **70 Beers 30 Ciders**

Live Music! SATURDAY

On-site camping & caravan facilities

£12

ENTRANCE PACKAGE
Includes: Festival glass & souvenir programme
Includes: 10 tokens, 1 glass, 1 programme, 1 discount for CAMRA members

Minibus Shuttle
Bus from Stratford to Ludington Road
Bus from Ludington Road to Stratford

STRATFORD-UPON-AVON 10th BEER & CIDER FESTIVAL
Friday 12th & Saturday 13th June 2015
www.stratfordbeerfestival.org.uk

OVER **SEVENTY BEERS AND THIRTY CIDERS**

Live Music Saturday!

£10.00

ENTRANCE PACKAGE
Includes: Festival glass & souvenir programme
Includes: 10 tokens, 1 glass, 1 programme, 1 discount for CAMRA members

Minibus Shuttle
Bus from Stratford to Ludington Road
Bus from Ludington Road to Stratford

STRATFORD-UPON-AVON TENTH BEER & CIDER FESTIVAL
Friday 10th June & Saturday 11th June 2016
STRATFORD RACECOURSE, LUDINGTON ROAD CV37 9SE
www.stratfordbeerfestival.org.uk

OVER **70 BEERS AND 30 CIDERS**

Live Music Saturday!

£10.00

ENTRANCE PACKAGE
Includes: Festival glass & souvenir programme
Includes: 10 tokens, 1 glass, 1 programme, 1 discount for CAMRA members

Minibus Shuttle
Bus from Stratford to Ludington Road
Bus from Ludington Road to Stratford

13th Stratford-upon-Avon Beer & Cider Festival
Friday 21 June 12.00 - 23.00
Saturday 22 June 11.00 - 23.00 **2019**

Stratford Racecourse
Ludington Road, Stratford-upon-Avon CV37 9SE

Shakespeare Branch CAMRA FOR REAL ALE

ENTRANCE PACKAGE £10 (cash only)
Includes £5 beer/cider tokens, glass and programme. Discount for CAMRA members.

Coast 2 Coast

Stratford-upon-Avon Eleventh Beer & Cider Festival
Friday 7th July & Saturday 8th July 2017
STRATFORD RACECOURSE, LUDINGTON ROAD CV37 9SE
www.shakespeare.camra.org.uk

Over **70 Beers and 30 Ciders**

Live Music Saturday!

£10.00

ENTRANCE PACKAGE
Includes: Festival glass & souvenir programme
Includes: 10 tokens, 1 glass, 1 programme, 1 discount for CAMRA members

Minibus Shuttle
Bus from Stratford to Ludington Road
Bus from Ludington Road to Stratford

12th Stratford-upon-Avon Beer & Cider Festival
Friday 6th July 12.00 - 23.00
Saturday 7th July 11.00 - 23.00 **2018**
Stratford Racecourse
Ludington Road, Stratford-upon-Avon CV37 9SE

Free minibus shuttle
On-site camping & caravan facilities

£10

ENTRANCE PACKAGE
Includes: Festival glass & souvenir programme
Includes: 10 tokens, 1 glass, 1 programme, 1 discount for CAMRA members

Minibus Shuttle
Bus from Stratford to Ludington Road
Bus from Ludington Road to Stratford

Free station shuttle
Food at all sessions
Live music on Saturday
On-site camping & caravan facilities

Over **70 real ales**
Over **30 ciders and perries**

Please raise a glass who help to keep our

INSIDE THIS EDITION...

Pub News pages 4 & 5
Stratford Beer Festival pages 6 & 7
Shakespeare Hospice page 12
Cotswold Beer Festival page 15



◀ Use your mobile phone's QR reader to scan

See our website shakespeare.camra.org.uk

From the Editor...



The clock is ticking down towards the 13th Stratford-upon-Avon Beer and Cider Festival on the 21st and 22nd of June.

This edition of Shakesbeer hopes to bring you up to speed on everything that will be happening on that weekend. Music, food and of course beer, not forgetting cider. Thanks to everyone who bring it all together. Special thanks go to Jason Norledge for his hard work organising the whole Festival for yet another year on top of his other

roles within the Branch. It is not too late for members to volunteer to help, from Wednesday 19th and Thursday 20th setting up. Friday and Saturday before and during the sessions and Sunday 23rd for taking down. Details can be found at festival.staffing@shakespeare.camra.org.uk. There is no musical offering from Alan Whitbread in this edition as he is unwell. Our thoughts and prayers go out to him and hope for a speedy recovery.

...and finally

CHURCHEND BREWERY, Nuneaton have introduced a new brew called *Shakesbeer* a tribute to our Branch and Newsletter in recognition of the valuable work we do promoting all aspects of the brewing industry. Probably...

Keep on drinking, Bernard



CAMRA Branch Contacts

Chairman **LLOYD EVANS** chair@shakespeare.camra.org.uk
Secretary **GWEN GODFREY** secretary@shakespeare.camra.org.uk
Treasurer **DAVE PAGE** treasurer@shakespeare.camra.org.uk
Membership Secretary **JOHN ROSS** membership@shakespeare.camra.org.uk
Pubs Officer **JASON NORLEDGE** pubs@shakespeare.camra.org.uk
Apple Contact **RHYS WILLIAMS** apple@shakespeare.camra.org.uk
Branch Contact **PETE GODFREY** contact@shakespeare.camra.org.uk
Editor Shakesbeer **BERNARD McGRAGHAN** editor@shakespeare.camra.org.uk
GBG Officer **PETE GODFREY** gbg@shakespeare.camra.org.uk
Social Secretary (Vacant)
Web Support **JOHN ROSS** webmaster@shakespeare.camra.org.uk
Festival Info **JASON NORLEDGE** festival.info@shakespeare.camra.org.uk
Festival Staffing **BOB MANSFIELD** festival.staffing@shakespeare.camra.org.uk

Are you interested in joining your local Shakespeare CAMRA committee? We would like to hear from you if you could help us to help our local members.

Do you have a few spare moments during the week when you could help our local committee with organising social events, or could you assist in gathering news or assist publishing this magazine by being part of our editorial team. What about liaising with the local landlords and pubs within our branch? If so we would like to hear from you however much time you can spare in any capacity. **Please contact us if you have any questions or would like to join:** chair@shakespeare.camra.org.uk

The editor reserves the right to amend or shorten contributions for publication.

Email: Editor@shakespeare.camra.org.uk

Disclaimer The views expressed in Shakesbeer are those of individual contributors and are not necessarily those of the Shakespeare branch or The Campaign for Real Ale Ltd. CAMRA accepts no liability in relation to the accuracy of articles or advertisements, readers must rely on their own enquiries. It should also be noted that acceptance of an advertisement in this publication should not be deemed an endorsement of quality by Shakespeare CAMRA.

Local Trading standards offices:

WARWICKSHIRE COUNTY COUNCIL

Old Budbrooke Road, Warwick CV35 7DP

WORCESTERSHIRE COUNTY COUNCIL

County Hall, Spetchley Road, Worcester WR5 2NP

CAMRA Ltd: 230 Hatfield Road, St. Albans, AL1 4LW
01727867201

Design and print by: Bloomfield Ltd.

Bidford-on-Avon, Warwickshire. 01789 490528

www.bloomfieldprinters.co.uk

Copyright © Shakespeare CAMRA 2019

NEXT Branch Meeting
Wednesday, 10th July, 8pm,
at THE PLOUGH,
Stretton-on-Fosse

(A full list of future meetings can be found in the CAMRA Members Section)

ADVERTISING RATES
AND CUT-OFF DATE
SHAKESBEER 72

Full Page Advert: £125

Half Page Advert: £80

Quantity special offer 4 for the price of 3

Cut off date for advertising copy 15th August 2019

SUBSCRIBE TO SHAKESBEER...

If you are a CAMRA member in the Shakespeare branch, you should receive a copy of Shakesbeer through the post (one per household). If you prefer, a PDF copy can be sent to you by email - just let Shakesbeer know. If you live outside the area or are not a CAMRA member but would like to subscribe and receive copies through the post, then please send an email to editor@shakespeare.camra.org.uk for further details or write to us at: **Shakesbeer, Editor**
c/o The Coach & Horses, Station Rd, Harvington
WR11 8NJ



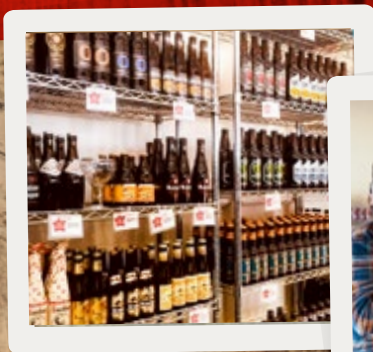


Purity
BREWING CO

GREAT BEER. REAL CHARACTER.



BREWERY SHOP



PICK UP YOUR BREWERY
FRESH BEER

WE'RE OPEN 9 - 5, MONDAY TO
FRIDAY, 10 - 1 ON SATURDAYS



FOR MORE INFORMATION PLEASE CALL
01789 488 007

The Brewery,
Upper Spennall Farm,
Off Spennall Lane, Great Alne,
Warwickshire B49 6JF



WWW.PURITYBREWING.COM

Pub News & Beer Reports...

Alcester

THE TURKS HEAD

Selected again as Branch pub of the year and as always proud to be so honoured.

Bretforton

THE FLEECE

THE FLEECE has been named as the best pub in Britain by the Bristol-based travel guide Sawdays. It scored top marks for its cosy atmosphere, vast array of local beers and cider and gutsy, hearty food offerings.



• The Fleece Inn

Harvington

COACH AND HORSES

Selected as Branch pub of the year for Worcestershire. Star Pubs website shows that the pub is up for lease, as licensees Steve and Di are retiring in July.



• The Coach and Horses (Harvington)

Honeybourne

THE THATCHED TAVERN

"Lease this Pub" sign has gone up outside this pub. Kevin Donegan is relinquishing the lease to concentrate on the **INN AND**

Beer Drinker, Reader or CAMRA Member - the reports and short stories below all come from people like yourself, so if you find yourself in one of our wonderful pubs, feel free to drop us a note about anything you think should be in this section! editor@shakespeare.camra.org.uk



• The Turks Head

BRASSERIE in Childswickham. Kevin has held the lease from Punch Taverns and now Heineken Star Pubs and Bars for the last 11 years with various managers in place.

Ilmington

THE RED LION

At **THE RED LION** in Ilmington the four handpumps dispense *Hooky, Old Hooky, Hooky Gold* and a seasonal such as *Double Stout* or *Beehive*. Landlord Andy at front of house keeps his beers in tiptop condition whilst Dee cooks delicious food. There is a huge garden for a relaxing summertime visit and an open log fire for warming you in winter. The pub opens at 4pm on Mondays and 12 noon the rest of the week. On Saturdays breakfasts from

10 am are popular and a good menu is available lunchtimes and evenings (not Mondays). Real cider is available too.

23 Beers of Shipston

Following a visit to the excellent Worcester Pub Beer Festival in March which featured 12 pubs within walking distance of the bus station, this reporter decided to make a survey of Shipston beers. On one day in April (2019) he counted 23 ales in the 7 pubs and all 23 were different!

The **COACH & HORSES** on the A3400 had four from Hook Norton,

including *Amarillo Gold*, plus a guest from *Batemans* called *St George's Glory*. At **THE HORSESHOE** two handpumps dispensed *Wye Valley HPA* and *Purity Mad Goose*. The delicious *Shagweaver* from nearby *North Cotswold Brewery* is also often available too. *Old Rosie* is the regular real cider.

Across the road at **THE WHITE BEAR** the three usual *Donnington ales* were on handpump together with *Spring Hopper* from *Arkells*. Two real ciders are available namely *Old Rosie* and *Flat*



• The Coach and Horses (Shipston)



• The George Townhouse

Tyre. Almost next door is **THE GEORGE TOWNHOUSE** and here the two regular beers of *Brakspear Bitter* and *Oxford Gold* were joined by *Wainwright* now brewed by *Marstons*.

Around the corner and back on Church Street (A3400) is **THE FALCON** which has three handpumps. *St Austell Tribute* is always available and the ever changing two others were serving *Greene King IPA* and *Laine's Dubloon*. Apparently, the pub name is soon to change back to **THE**

WHITE HORSE.

Diagonally opposite and close to the bus stop is Shipston's first micro pub **THE THIRST EDITION**. A blackboard notice proclaimed that since opening at Easter 2018 the pub had sold 240 different beers with a further 53 repeats. This total has included the whole range from nearby *North Cotswold Brewery* at Ditchford and the whole range of *Clouded Minds Brewery* in Brailes. The micro pub opens at 4pm during the week and 3pm Saturday/Sunday. Ten casks are racked on stillage



• The Horseshoe



• The Falcon

and from these four or five are served every day. Also five ciders and perries are kept. Finally a 200 yard walk along Station Road took me to the thatched **BLACK HORSE**. Licensed since 1540 this is Shipston's oldest pub and has four handpumps. Regulars are *Prescott Hill Climb* and *Wye Valley Butty Bach* plus *Hogan's Harvest Press* cider and the fourth handpump was dispensing *Cotleigh Amadeus*.

Bus service 50 to Shipston from Stratford runs hourly (two hourly Sundays) and takes 25 minutes. Last return bus 1850.

Conclusion...

It is good to see such a large choice of ales and all different. Real ale is evidently much in demand in Shipston and other places in the Branch at present and this reporter can only rejoice in what has happened in his 50 years of sampling. Whilst living in the Warwickshire village of Newbold-on-Avon in the late 60s his



• The White Bear



• The Black Horse

two locals were **THE BOAT** serving *Davenports Bitter* and **THE BARLEY MOW** serving *Draught Bass* both served by handpump. The words real ale and cask conditioned had to wait to be introduced when CAMRA was born a few years later but he was fortunate to find agreeable beer in both pubs. Many pubs elsewhere were keg only. Alas in recent years **THE BOAT** has closed its doors.

Jim Sargent

Festival 2019 - Music

Saturday entertainment starts at 2:00pm with **Lucas D and the Groove Ghetto**

They are a 6-piece instrumental Acid Jazz Outfit playing eclectic tunes from the 60/70s right up to contemporary jazz funk. Performed by Birmingham's best musicians creating a groove that captivates an audience. Playing till 4:00pm. Founded in February 2012 in the back streets of Harborne, the band is a coming together of mainly two groups who have collaborated in sessions with each other over the years as part of the music fraternity around Birmingham and the West Midlands.

This amazing group, whose CV covers a wealth of musical styles and seasoned collaborations, promises to wow listeners with a special experience of raw talented performances.

With appearances at major festivals and top-quality venues, the band has a wealth of experience and all cut their teeth with established musicians and collectives in many genres of music.



- Four Real Ales
- Real Cider
- 5 Star Food Hygiene Rating
- Cask Marque

plus Quiz Night every Sunday!

FOOD SERVED:

Traditional Pub Food & Sunday Lunches
Mon-Sat: 6pm-8.30pm : Sunday Lunch: 12pm-3pm

We show



THE COACH AND HORSES

Harvington WR11 8NJ **01386 870249**

info@coachandhorsesharvington.com
www.coachandhorsesharvington.com

FUNCTION
ROOM
& SKITTLE
ALLEY



Worcestershire
County
**Pub of the Year
2016**

Shakespeare
Branch
**Worcestershire
Pub of the Year 2017**
Fourth Year
Running

Shakespeare
CAMRA
**Pub of the
Season
Spring 2013**

**OUTSIDE
CATERING
& MOBILE
BAR**

Opening times: Mon-Fri 5pm to 12.00
Sat. 12-12 :: Sun. 12-11.30

Saturday entertainment continues at 5:00pm with **Steve Ajao and his Blues Giants**

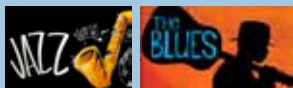
Steeped in the Blues and Jazz all his life, Birmingham guitarist Steve Ajao and his Blues Giants (Mike Hatton – Bass, and former Au Pairs drummer Pete 'Washboard' Hammond) have been amazing audiences for nearly 30 years and Steve is regarded by many as one of the hottest Blues guitarists in the UK. Despite being widely known in the Midlands, in a broader national and international context, he remains one of Birmingham's undiscovered talents and as far back as the 1980s, legendary Blues man and broadcaster the late Alexis Korner was hailing Steve as a huge talent with an international future. Close your eyes one moment and you'd think you were listening to a band direct from the Mississippi Delta, and the next, to Jimi Hendrix. Few players around offer this kind of guitar genius and this powerhouse three piece remains an absolutely must-see act, especially when the band wander off, New Orleans marching band style, and mingle with the crowd while playing Number Nine!



The Crown & Trumpet

The Crown & Trumpet is located behind the village green of Broadway, this 17th Century Inn provides excellent accommodation. Being centrally located and just off the Cotswold Way, it is an ideal base for touring Shakespeare's Country and the surrounding Cotswold and Malvern Hills.

Serving Lunch and Dinners all through the week, all our seasonal homemade dishes are created on the premises using locally produced ingredients. Voted Shakespeare's CAMRA pub of the year in 2012/ CAMRA Good Beer and rated in Room at an Inn and Good Pub guides, we have four exclusively brewed seasonal beers. Come along and drink them at our weekly Jazz and Blues evenings.



14 Church Street, Broadway,
Worcs. WR12 7AE
0044 (0)1386 853202
info@cotswoldholidays.co.uk
www.cotswoldholidays.co.uk



13th Stratford-upon-Avon Beer & Cider Festival

Friday 21 June 12.00 - 23.00

Saturday 22 June 11.00 - 23.00

2019

Stratford Racecourse

Luddington Road, Stratford-upon-Avon CV37 9SE

Shakespeare Branch

CAMPAIGN

FOR

REAL ALE



**ENTRANCE
PACKAGE**

£10 (cash only)

Includes £5 beer/cider tokens, glass and programme. Discount for CAMRA members.

Coast 2 Coast

Free station shuttle

Food at all sessions

Live music on Saturday

On-site camping &
caravan facilities

Over 70 real ales

Over 30 ciders and perries



Supporting
Shakespeare
Hospice



Please raise a glass to the generous sponsors
who help to keep our costs down!

Website: stratfordbeerfestival.org.uk

Email: info@stratfordbeerfestival.org.uk



@SoABeerFest



SoABeerFest



Festival Sponsors

Beer Bar

sponsored by *Wye Valley Brewery*



Cider Bar

sponsored by *Hogan's Cider*



Beer Tokens

sponsored by *The Red Lion, Evesham*



Seating & Entertainment

area sponsored by *North Cotswold Brewery*



Quiet Area

sponsored by *Fullers Brewery*



Exit Suite & Turnstiles

sponsored by *Purity Brewery*



Other Sponsors include



Festival 2019 - Food

Food will be available as follows:

Fri: 12 noon to 9:30 pm (approx.) • Sat: 11 am to 9:30 pm (approx.)



THE LAZY PIG co.

The Lazy Pig Co Ltd are an established and leading wedding and event caterer. Our menus are a twist on street food and gastro pub food and gourmet barbecues with an exciting and diverse selection of sides and desserts. We use our local butcher for all our meat which is free range and traceable to the source.

We cater for events 365 days a year indoors or outdoors using our pop-up kitchens or venue kitchens! Our staff are all experienced, trained, passionate and personable.

The Lazy Pig Co Ltd are an approved wedding caterer to all English Heritage sites including our local venue Kenilworth Castle.

CAFÉ MEXICO

Mexican street food caterer based in Warwickshire, freshly made and locally sourced. Burritos, nachos, tacos. Available for private hire parties and events across the region.

4 Oaktree Close
Stratford-upon-Avon,
Warwickshire
CV37 0SD



FRESH GUAC \$1		NACHOS	
CHERRY	\$4	CAJUN CHICKEN	\$6
BEEF	\$6	VEGETE CHILLI	\$6
COLD DRINKS	\$1		

Café Mexico

Proudly Sponsoring
STRATFORD-UPON-AVON
**BEER
FESTIVAL**



The quintessential English pub.

Owned by The National Trust, run with a love
of tradition.

Local Regular & Guest Cask Ales & Cider

Medieval Thatched Barn available to hire for Functions & Weddings

For further details contact Nigel on 01386 831173
nigel@thefleeceinn.co.uk / www.thefleeceinn.co.uk

Every Thursday from around 8.45pm - Folk Night, all welcome



The Red Lion

- Traditional -
**BRITISH
PUB!**



THE RED LION —EVESHAM—

Wide selection of locally brewed
real ales, ciders and perry served in a
fun and friendly atmosphere

- Selection of wines, lager & soft drinks •
- Regular Quiz Night •
- Live Music Events every Friday •
- Dog Friendly • Bring your own food •
- Beer & Banter Pub with real fires •

Town centre location close to
Abbey Park & iconic Bell Tower

Telephone: 01386 761688

Red Lion, 6 Market Place, Evesham WR11 4RW

Proudly Sponsoring
STRATFORD-UPON-AVON
**BEER
FESTIVAL**

Supporting the Shakespeare Hospice



During 2007 to 2018 the Beer and Cider Festival has helped raise over £10,000 for the Shakespeare Hospice.

The Charity's principal object is to promote the relief of sickness in such ways as the Association shall from time to time think fit by:

- Establishing, maintaining and conducting a day centre or residential home in the county of Warwickshire for the reception and care of persons of either sex (without regard to race or creed) who are suffering (at any age) from any chronic or terminal illness or from any disability or disease whether attributable to old age or otherwise from any other physical infirmity, disability or disease, and by providing medical or other treatment and attention for such persons as aforesaid in their own homes.
- Conducting or promoting or encouraging research into the care and treatment of persons suffering from any such illness,

disability, disease or infirmity as aforesaid and particularly into the care and treatment of persons suffering from cancer or terminal illness and to disseminate the results thereof to the public.

- Promoting or encouraging or assisting in the teaching or training of doctors, nurses, physiotherapists and other persons engaged in any branch of medicine, surgery, nursing or allied services, and in the teaching or training of students in any branch of medicine, surgery, nursing and allied services.
- Providing or assisting or encouraging the provision of spiritual help and guidance for any persons resident (either as patients or otherwise) or working in any such day centre, home or homes as aforesaid.

Shakespeare Branch DIARY

All events 8pm unless otherwise stated

21st - 22 June

13th STRATFORD-UPON-AVON BEER AND CIDER FESTIVAL

Stratford-upon-Avon Race Course, Luddington Road, Stratford-upon-Avon CV37 9SE

27th - 29th June

Bromsgrove Beer and Cider Festival at the Rugby Club

10th July

Branch Meeting at **THE PLOUGH** at Stretton

19th - 21st July

43rd Annual Cotswold Beer Festival at Postlip Hall

11th - 13th July

44th Wolverhampton Beer and Cider Festival
Newhampton Arts Centre

The Boars Head

Church Street, Hampton Lucy CV35 8BE



Opening Hours:

12.00pm - 12.00am Fri. & Sat. • 12.00pm - 8.00pm Sun
12.00pm-11.00pm Mon. to Thurs.

Food served:

ALL DAY Fri. & Sat. • 12.00pm - 3.00pm Sun.
12.00pm - 2.30pm & 6.00pm-9.00pm Mon. to Thurs.

01789 840533

www.theboarsheadhamptonlucy.com
theboarsheadhamptonlucy@gmail.com

~ Find us on Facebook/theboarshead ~



The Broom Tavern



BEAUTIFUL 16TH CENTURY PUBLIC HOUSE

Traditional bar serving local award winning real ales, ciders and fine wines and situated in one of Shakespeare's drinking haunts

Sunny spacious front and rear beer gardens for the warm weather and roaring log fires for those cold rainy days

Great quality, fresh local ingredients brought together to create fantastic seasonal menus from two well established Midlands chefs

Refurbished and restored both inside and out, offering free WiFi and daily newspapers

Lovely Sunday lunches with Fritz's famous Yorkshire puddings served every week from 12pm

OPENING HOURS:

Monday to Friday 12pm-3pm and 5pm onwards : Saturday & Sunday All day from 12pm

FOOD SERVICE: Monday to Friday 12pm-2.30pm and 6pm-9.30pm

Saturday 12pm-9.30pm and Sunday 12pm-4pm

32, High Street, Broom, Alcester, Warwickshire B50 4HL

Email us on enquiries@thebroomtavern.co.uk or call us on 01789 778199

www.thebroomtavern.co.uk

/thebroomtavern

@TheBroomTavern

WEATHEROAK TAP HOUSE

STUDLEY

WEATHEROAK BREWERY'S VERY OWN FREE HOUSE

SITUATED ON THE HIGH STREET IN STUDLEY, A UNIQUE, SMALL AND VERY FRIENDLY MICRO PUB OFFERING A VAST SELECTION OF WEATHEROAK BREWERY ALES AND GUEST ALES TOO! ALSO ON OFFER IS A RANGE OF DRAUGHT CIDERS, WINES AND SPIRITS



Open 7 Days

MON	4.00pm - 9.00pm
TUE	12.30pm - 10.30pm
WED	12.30pm - 10.30pm
THU	12.30pm - 10.30pm
FRI	12.30pm - 11.00pm
SAT	12.00pm - 11.00pm
SUN	12.00pm - 9.00pm



21a High Street, Studley, B80 7HN. For further information call 01527 854433, email toby@weatheroakbrewery.co.uk or visit our website www.weatheroakbrewery.co.uk



The 43rd Annual

Cotswold

BEER

Fri 19 -
Sun 21 **July '19**

AT POSTLIP HALL

FESTIVAL

80 Real Ales 30 Ciders & Perries

Live Music ☆ BBQ ☆ Camping ☆ Bus Service ☆ Free Parking



f /cotswoldbeerfest **t** @CBF_beerfest

@ @cbf_beerfest www.postlipcamra.org.uk

Cotswold Beer Festival

On Friday 19th July to Sunday 21st July the legendary Cotswold Beer Festival returns to its home at Postlip Hall and celebrates 43 years of good beer, good company and good times.

This unique festival, run entirely by volunteers, gives a warm welcome to beer beginners and beer buffs alike. It's a stunning location to enjoy real ales and ciders, local food and a great atmosphere in the company of good friends and family. The Friday night ticket is ideal for beer buffs, where connoisseurs and beginners alike can sample the widest range of real ales and ciders that the festival has to offer. To announce the start of the Festival weekend we'll have toe-tapping live music. The Saturday all day ticket (12pm to 9pm) is a time to bring all the family – under 18 year-olds go free. We sold

out last year, so buy your tickets early to avoid disappointment. There will be face-painting, a bouncy castle, Morris dancing and more. For those who want a relaxed summer evening at the Festival there's a Saturday Evening only ticket (4.30pm – 9pm). Our Sunday ticket give you a risk-free introduction to the Festival, entry and buses are free – although you will

need to buy a souvenir glass if you want a pint! It's a lucky-dip day of beers, ciders and perries – some will have sold out, but there is plenty on offer.

Adult tickets start at £8 and children go free and there is an early bird discount for those that plan ahead www.postlip.camra.org.uk



See our website shakespeare.camra.org.uk



GREAT BRITISH
BEER
FESTIVAL
LONDON 2019

The live beer experience

Supporting
your local
Breweries

6-10 August • Olympia London

This year the Great British Beer Festival takes you on a journey from the smallest seed to the perfect pint! Experience the natural magic of grain to glass, while enjoying live music, fabulous food and more...

Book your tickets today

gbbf.org.uk



Campaign
for
Real Ale

PLUS Cider & Perry • **NEW** Wine & Gin Bar • Music • Street Food
NEW International Beer Festival • Entertainment • **NEW** Beer Discovery Zone

LocAle

CAMRA LocAle - promoting pubs that sell locally-brewed real ale, reducing the number of 'beer miles', and supporting local breweries. CAMRA LocAle is an initiative that promotes pubs stocking locally-brewed real ale. The scheme builds on a growing consumer demand for quality local produce and an increased awareness of 'green' issues.

The CAMRA LocAle scheme was created in 2007 by CAMRA's Nottingham branch which wanted to help support the tradition of brewing within Nottinghamshire, following the demise of local brewer Hardys and Hansons. Following on from our LocAle feature in Shakesbeer Spring 2013 we will be keeping you up to date on the most recent LocAle accredited pubs. Below are our most recent locale conscriptors and so you should be able to track down a pint of beer produced with 30 miles of that pub.

Everyone benefits from local pubs stocking locally-brewed real ale...

- Public houses as stocking local real ales can increase pub visits
- Consumers who enjoy greater beer choice and diversity
- Local brewers who gain from increased sales
- The local economy because more money is spent and retained locally
- The environment due to fewer 'beer miles' resulting in less road congestion and pollution
- Tourism due to an increased sense of local identity and pride - let's celebrate what makes our locality different

Accreditation is at the sole discretion of the local CAMRA branch and subject to the licensee agreeing to the following...

- That they will endeavour to ensure at least one locally brewed real ale, as defined by the local branch, is on sale at all times
- Only real ale, as defined by CAMRA, can be promoted as a CAMRA LocAle
- Where the standard of real ale sold falls below an acceptable quality, accreditation will be withdrawn
- That accreditation can be withdrawn at any time at the discretion of the local branch
- That should accreditation be withdrawn, or should the licensee withdraw from the scheme, all LocAle publicity material must be removed from the pub and the licensee cease using the CAMRA LocAle logo.



Definition of Local

The Sustainable Communities Act, which CAMRA strongly supports, provides a definition of local as up to 30 miles from the point of sale. CAMRA recommends that the distance is calculated from the pub to the brewery and should be based on the shortest driving distance. Real ales from regional and national breweries as well as from microbreweries can be

regarded as "local" if they are brewed within what the branch has decided as being the local area.

How do I find a LocAle Pub?

Pubs which have been given LocAle status by their local CAMRA branch can display the LocAle sticker on their windows/doors. The stickers have the

year for which they have been accredited as LocAle pubs by their branch. They may also have posters up in the pub and on the pumps that are serving locally brewed beers there will be LocAle pump clip crownners.

To find a locale accredited pub in this area see the branch website and look for the <http://www.shakespearecamra.org.uk/rainshc/>

Armscote **FUZZY DUCK**; Brailes (Lower) **GEORGE INN**; Brailes (Upper) **GATE INN**; Bretforton **FLEECE INN**; Broadway **CROWN & TRUMPET, BROADWAY HOTEL**; Broom **BROOM TAVERN**; Cherington **CHERINGTON ARMS**; Edgehill **CASTLE INN**; Evesham **RED LION, ROYAL OAK, TRUMPET**; Great Alne **MOTHER HUFF CAP**; Hampton Lucy **BOARS HEAD**; Ilmington **HOWARD ARMS, RED LION**; Little Compton **RED LION**; Long Compton **RED LION**; Newbold-on-Stour **WHITE HART INN**; Oxhill **PEACOCK**; Sedgeberron **QUEENS HEAD**; Shipston-on-Stour **BLACK HORSE INN, COACH & HORSE, GEORGE INN, THE WHITE BEAR**; Stratford-upon-Avon **BEAR (SWANS NEST), FALCON HOTEL, GOLDEN BEE, ONE ELM, STRATFORD ALE HOUSE**; Stretton-on-Fosse **PLOUGH**; Welford-on-Avon **BELL INN**; Whichford **NORMAN KNIGHT**.



Join up, join in, join the campaign

From
as little as

£25*

a year. That's less
than a pint a
month!

Discover
why we joined.
[camra.org.uk/
members](http://camra.org.uk/members)

**Join us, and together we can protect the traditions of great
British pubs and everything that goes with them.**

Become part of the CAMRA community today – enjoy discounted entry to beer festivals and exclusive member offers. Learn about brewing and beer and join like-minded people supporting our campaigns to save pubs, clubs, your pint and more.

Join the campaign today at
www.camra.org.uk/joinup

*Price for paying by Direct Debit and correct at April 2017. Concessionary rates available.
Please visit camra.org.uk/membership-rates



**CAMPAIGN
FOR
REAL ALE**

Join up, join in, join the campaign



You are just moments away from a year in beer heaven!

From as little as £25* today, be part of the CAMRA community and enjoy discounted entry to around 200 beer festivals, exclusive member offers and more. Discover all the ins and outs of brewing and beer with fantastic magazines and newsletters, but even more importantly support various causes and campaigns to save pubs, cut beer tax and more.

Join CAMRA today

Enter your details and complete the Direct Debit form below to get 15 months for the price of 12 for the first year and save £2 on your membership fee.

Alternatively you can send a cheque payable to CAMRA Ltd with your completed form, visit www.camra.org.uk/joinup or call 01727 798440. All forms should be addressed to Membership Department, CAMRA, 230 Hatfield Road, St Albans, AL1 4LW.

Your details:

Title Surname
Forename(s)
Date of Birth (dd/mm/yyyy)
Address
.....
..... Postcode
Email address
Tel No(s)

	Direct Debit	Non DD
Single Membership	£25 <input type="checkbox"/>	£27 <input type="checkbox"/>
(UK & EU)		
Joint Membership	£30.50 <input type="checkbox"/>	£32.50 <input type="checkbox"/>
(Partner at the same address)		

*For information on Young Member and other concessionary rates please visit www.camra.org.uk/membership-rates or call 01727 798440.

I/we wish to join the Campaign for Real Ale, and agree to abide by the Memorandum and Articles of Association these are available at camra.org.uk/memorandum ☐

Signed

Date

Applications will be processed within 21 days of receipt of this form. 04/17

Partner's Details (if Joint Membership)

Title Surname
Forename(s)
Date of Birth (dd/mm/yyyy)
Joint member's Email
Joint member's Tel No

CAMRA FOR REAL ALE		DIRECT Debit	
<p align="center">Instruction to your Bank or Building Society to pay by Direct Debit</p> <p align="center">Please fill in the whole form using a ball point pen and send to: Campaign for Real Ale Ltd, 230 Hatfield Road St. Albans, Herts AL1 4LW</p>			
<p>Name and full postal address of your Bank or Building Society</p> <p>To the Manager Bank or Building Society</p> <p>Address</p> <p>Postcode</p>		<p>Service User Number</p> <p>9 2 6 1 2 9</p>	
<p>Names(s) of Account Holder</p> <p>Bank or Building Society Account Number</p> <p>Branch Sort Code</p> <p>Reference</p>		<p align="center">FOR CAMRA OFFICIAL USE ONLY</p> <p>This is not part of the instruction to your Bank or Building Society</p> <p>Membership Number</p> <p>Name</p> <p>Postcode</p>	
<p>Instructions to your Bank or Building Society</p> <p>Please pay Campaign For Real Ale Limited Direct Debits from the account detailed on this instruction subject to the safeguards assured by the Direct Debit Guarantee. I understand that this instruction may remain with Campaign For Real Ale Limited and, if so will be passed electronically to my Bank/Building Society.</p> <p>Signature(s)</p> <p>Date</p>			
<p>The Direct Debit Guarantee</p> <p>This Guarantee should be detached and retained by the payer.</p> <ul style="list-style-type: none"> This Guarantee is offered by all banks and building societies that accept instructions to pay by Direct Debit. If there are any changes to the amount, date or frequency of your Direct Debit The Campaign for Real Ale Ltd will notify you to working days in advance of your account being debited or as otherwise agreed. If you request The Campaign for Real Ale Ltd to collect a payment, confirmation of the amount and date will be given to you at the time of the request. If an error is made in the payment of your Direct Debit by The Campaign for Real Ale Ltd or your bank or building society, you are entitled to a full and immediate refund of the amount paid from your bank or building society. If you receive a refund you are not entitled to, you must pay it back when The Campaign Real Ale Ltd asks you to. You can cancel a Direct Debit at any time by simply contacting your bank or building society. Written confirmation may be required. Please also notify us. 			

Banks and Building Societies may not accept Direct Debit Instructions for some types of account.

New Direct Debit members will receive a 12 month supply of vouchers in their first 15 months of membership



Shakespeare
CAMRA
Warwickshire
Pub of
the Year



Proudly Sponsoring
STRATFORD-UPON-AVON
**BEER
FESTIVAL**

THE BEAR

— STRATFORD-UPON-AVON —

A traditional English pub in a
tranquil waterside location on the
banks of the River Avon.

8 Real Ales
Quality Draught Lagers
Selection of Wines by the Glass
Fabulous Pub Food
Sunday Roasts
Gluten Free Menu

FREE HOUSE AND KITCHEN

Bridgefoot, Stratford-upon-Avon,
CV37 7LT. Tel: 01789 265 540

@TheBearPub
www.thebearfreehouse.co.uk

ORIGINAL **PIERRE** DEPUIS 1994
LE BISTROT

**Come along and discover
great value French bistro
cooking made with authentic,
fresh ingredients.**

Lunch 8.95 / 10.95 / 12.95
for one, two or three courses
Pre theatre two courses 14.95
A la carte also available

A bientôt!



Swan's Nest, Bridgefoot, Stratford-upon-Avon,
CV37 7LT. Tel: 01789 264 804

@LeBistrotPierre / LeBistrotPierre
www.lebistrotpierre.co.uk